

Implementation of the Convention on the Rights of the Child

Initial Report Submitted under Article 44 of the Convention
Republic of China (Taiwan) 

【Attachment】

行政院
Executive Yuan



Child and Youth Welfare and Rights Promotion Group



November 2016

【ATTACHMENT】

| | |
|--|----|
| INTRODUCTION | 1 |
| Attachment Intro.-1(Paragraph 4) Implementation Act of the Convention on the Rights of the Child..... | 1 |
| Attachment Intro.-2 (Paragraph 1 -Remarks 1) Population Overview of Children and Youth ... | 3 |
| CHAPTER 1 GENERAL MEASURES OF IMPLEMENTATION | 5 |
| Attachment 1-1 (Paragraph 6) Laws and Regulations on the Priority Review List..... | 5 |
| Attachment 1-2 (Paragraph 13) Central Government’s Allocation of Funding for Children and Youth Groups | 7 |
| Attachment 1-3 (Paragraphs 14, 203, 230, 266, 290, 353) International Assistance and Cooperation..... | 18 |
| Attachment 1-4 (Paragraph 22) Results of CRC Educational Training..... | 26 |
| CHAPTER 3 GENERAL PRINCIPLES | 29 |
| Attachment 3-1 (Paragraph 69) Number of Pregnant Senior High School Students Who Remain in School..... | 29 |
| Attachment 3-2 (Paragraph 74) Number of Live Births and Stillbirths Reported to Authorities..... | 29 |
| Attachment 3-3 (Paragraph 74) Infant Deaths and Mortality Rate..... | 29 |
| Attachment 3-4 (Paragraph 74) Top 10 Causes of Infant Deaths | 30 |
| Attachment 3-5 (Paragraph 74) Mid-year Populations, Deaths and Mortality Rates of Minors .. | 32 |
| Attachment 3-6 (Paragraph 74) Rate of Deaths Caused by Accidents Among Minors | 33 |
| Attachment 3-7 (Paragraph 74) Suicide Rate among Minors | 33 |
| CHAPTER 5 FAMILY ENVIRONMENT AND ALTERNATIVE CARE | 35 |
| Attachment 5-1 (Paragraph 137) Statistics on Family Education Activities, Family Education Counseling Hotlines, and Individualized Parenting Educational Services Sponsored by Family Educational Centers of Local Governments, and Statistics on Parenting Education Services Sponsored by Social Affairs Departments | 35 |
| Attachment 5-2 (Paragraphs 141, 212, 233) Subsidies for Expenses for Early Intervention Treatment | 35 |
| Attachment 5-3 (Paragraphs 141, 233) Statistics on Child Care Services..... | 36 |
| Attachment 5-4 (Paragraphs 141, 233) Statistics on Community-based Care (After-School Care) for Children and Youth from Disadvantaged Families..... | 36 |
| Attachment 5-5 (Paragraphs 141, 233) Statistics on Living Assistance to Disadvantaged Children and Youth | 37 |
| Attachment 5-6 (Paragraphs 141, 233) Statistics on Emergency Living Assistance to Disadvantaged Children and Youth..... | 37 |
| Attachment 5-7 (Paragraphs 141, 233) Statistics on Assistance for Families in Hardship..... | 38 |

| | |
|--|----|
| Attachment 5-8 (Paragraphs 141, 233) Statistics on Medical Care Subsidies for Children and Youth | 38 |
| Attachment 5-9 (Paragraphs 141, 233) Allowances for Unemployed Parents with Children Under the Age of 2 | 39 |
| Attachment 5-10 (Paragraphs 141, 233) Child Care Subsidy for Employed Parents with Qualified Child Care Providers..... | 39 |
| Attachment 5-11 (Paragraphs 141, 233, 236) Subsidies for After-School Care Classes for Children..... | 40 |
| Attachment 5-12 (Paragraphs 141, 233, 236) Statistics on After-School Care and Service Centers for Children..... | 40 |
| Attachment 5-13 (Paragraphs 141, 233) Statistics on Free Education Plan for 5-Year-Old Preschoolers | 41 |
| Attachment 5-14 (Paragraphs 141, 233) Statistics on Implementation of “After-School Supporting Plan for Children of Indigenous Families” and Subsidies for Indigenous Children Attending Preschool | 41 |
| Attachment 5-15 (Paragraphs 141, 233) Statistics on Child Care Facilities or Measures of Business Entities With More Than 250 Employees | 42 |
| Attachment 5-16 (Paragraphs 141, 233) Statistics on Parental Leave Allowance..... | 42 |
| Attachment 5-17 (Paragraphs 141, 233) Impact of Special Tax Deductions for Preschool Children..... | 43 |
| Attachment 5-18 (Paragraph 152) Number of Visitor and Resident Visas Issued to Foreign Minors who Are the Children of ROC Nationals With Household Registration in Taiwan..... | 43 |
| Attachment 5-19 (Paragraph 161) Statistics on Children and Youth Placed in Placement Institutions..... | 44 |
| Attachment 5-20 (Paragraph 161) Statistics on Foster Families and Foster Children..... | 44 |
| Attachment 5-21 (Paragraph 161) Statistics on Children and Youth in Long-term Placement (Over Two Years) | 45 |
| Attachment 5-22 (Paragraph 161) Statistics on Abandoned Babies, Children and Youth | 46 |
| Attachment 5-23 (Paragraph 161) Independent-Living Program for Youth Leaving Foster Care | 46 |
| Attachment 5-24 (Paragraph 171) Statistics on Reasons for Children Being Adopted (Multiple Choices)..... | 47 |
| Attachment 5-25 (Paragraph 171) Statistics on Children and Youth of Domestic and Inter-Country Adoption..... | 48 |
| Attachment 5-26 (Paragraph 171) Number of Adoptions Approved or Terminated by the Court..... | 48 |
| Attachment 5-27 (Paragraph 171) Inter-country Adoption Cases by Country | 49 |
| Attachment 5-28 (Paragraph 172) Number of Cases and People Prosecuted by District | |

| | |
|---|-----------|
| Prosecutors' Office, in compliance with Articles 241 and 242 of the "Criminal Code" | 49 |
| Attachment 5-29 (Paragraph 172) Number of Convictions by the District Prosecutors' Offices, in compliance with Articles 241 and 242 of the "Criminal Code" | 50 |
| Attachment 5-30 (Paragraph 173) Procedures to Help Search for Missing Children or Youth Taken Away by Parents (or Relatives) without Official Permission | 51 |
| Attachment 5-31 (Paragraph 173) Statistics on Missing Children and Youth of Different Age Groups Taken Away by Parents (or Relatives) without Official Permission | 53 |
| Attachment 5-32 (Paragraph 173) Outcomes of Investigations and Searches for Missing Children and Youth Taken Away by Parents (or Relatives) without Official Permission | 53 |
| Attachment 5-33 (Paragraph 174) Reported Cases of Missing Children and Youth Taken Away by Parents or Relatives without Official Permission | 54 |
| Attachment 5-34 (Paragraph 177) Statistics on People Obligated to Report Abuse or Neglect of Children or Youth and the Number and Types of Cases Reported..... | 55 |
| Attachment 5-35 (Paragraph 178) Number of Abused Children or Youth, Types of Abuse, Deaths from Serious Abuse..... | 56 |
| Attachment 5-36 (Paragraphs 161, 178) Statistics on Children and Youth Put In Protective Placement | 58 |
| Attachment 5-37 (Paragraph 178) Statistics on Protective Placements Ordered by District (Juvenile and Family) Courts | 59 |
| Attachment 5-38 (Paragraph 183) Statistics on Services for Children and Youth from High-Risk Families..... | 60 |
| Attachment 5-39 (Paragraph 184) Initiatives Taken by Authorities to Care for Disadvantaged Children Aged 6 or Under | 60 |
| CHAPTER 6 BASIC HEALTH AND WELFARE | 61 |
| Attachment 6-1 (Paragraph 193) Statistics on Unnatural Deaths of Children and Youth..... | 61 |
| Attachment 6-2 (Paragraph 195) Statistics on Children and Youth with Disabilities and Breakdown of Disabilities by Category | 62 |
| Attachment 6-3 (Paragraph 198) Statistics on the Schooling of Children and Youth with Disabilities | 63 |
| Attachment 6-4 (Paragraph 199) Statistics on Individuals with Disabilities Between the Ages of 15 and 18 Receiving Vocational Training or Attending Special Vocational Training Classes | 64 |
| Attachment 6-5 (Paragraph 200) Statistics on Beneficiaries of Subsidies for People with Disabilities (including Children and Youth with Disabilities) | 65 |
| Attachment 6-6 (Paragraph 200) Statistics on Children and Youth with Disabilities Accommodated in Welfare Institutions..... | 66 |
| Attachment 6-7 (Paragraph 200) Statistics on Children and Youth with Disabilities | |

| | |
|--|-----------|
| Accommodated in Placement and Educational Institutions..... | 66 |
| Attachment 6-8 (Paragraph 200) Statistics on Children and Youth with Disabilities in Foster Care | 67 |
| Attachment 6-9 (Paragraph 201) Statistics on Supportive Measures for Parents of Disabled Children and Youth | 67 |
| Attachment 6-10 (Paragraph 206) Utilization Rate of Prenatal Examinations..... | 67 |
| Attachment 6-11 (Paragraph 208) Utilization Rate of Subsidies for Prenatal Genetic Screening..... | 68 |
| Attachment 6-12 (Paragraph 210) National Immunization Coverage Rates for Children..... | 68 |
| Attachment 6-13 (Paragraph 211) Statistics on Hearing Screening for Newborns..... | 69 |
| Attachment 6-14 (Paragraph 211) Statistics on Screening of Congenital Metabolic Disorders in Newborns | 69 |
| Attachment 6-15 (Paragraph 211) Utilization Rate of Children’s Preventive Health Checkups over the Past Years | 70 |
| Attachment 6-16 (Paragraph 213) Statistics on Eyesight, Strabismus and Amblyopia Screening for Preschoolers | 70 |
| Attachment 6-17 (Paragraph 232) Number of Children and Youth Covered by National Health Insurance | 71 |
| Attachment 6-18 (Paragraph 232) Number of Beneficiaries Aged 18 or Under Receiving National Pension Payments as Surviving Family Members and the Total Amount of the Payments..... | 72 |
| Attachment 6-19 (Paragraph 234) Statistics on Children and Youth of Low-Income and Low-To-Middle Income Households..... | 73 |
| Attachment 6-20 (Paragraph 235) Statistics on Child Care Services for Children Under the Age of 2 | 74 |
| Attachment 6-21 (Paragraph 235) Number of Children Between the Ages of 2 and 5 Attending Preschools | 75 |
| Attachment 6-22 (Paragraph 237) Statistics on Subsidies to Business Entities for Child Care Facilities or Measures | 75 |
| Attachment 6-23 (Paragraph 239) Statistics on Households Receiving Interest Subsidies for Mortgages and Rental Subsidies | 76 |
| CHAPTER 7 EDUCATION, LEISURE AND CULTURAL ACTIVITIES..... | 77 |
| Attachment 7-1 (Paragraph 241) Statistics on Participation in Non-School-Based Experimental Education | 77 |
| Attachment 7-2 (Paragraph 241) Number of Formal Employed Teachers and the Student-Teacher Ratio in Primary and Junior High Schools..... | 77 |
| Attachment 7-3 (Paragraph 241) Number of Full-Time and Part-Time Substitute Teachers in Primary and Junior High Schools | 78 |
| Attachment 7-4 (Paragraph 241) Average Enrollment Rates at Different Level of Education.. | 78 |

| | |
|---|-----------|
| Attachment 7-5 (Paragraph 246) The Enrollment Rate of 5-Year-Old Preschoolers..... | 78 |
| Attachment 7-6 (Paragraph 247) Tuition Fees for the 2015 School Year at Senior High Schools | 79 |
| Attachment 7-7 (Paragraph 250) Statistics on the Number of Students of Senior High School and Higher Levels Applying for Student Loans and the Amount of Loans Granted..... | 80 |
| Attachment 7-8 (Paragraph 253) Statistics on Dropouts from Elementary and Junior High Schools and Dropout Rate..... | 81 |
| Attachment 7-9 (Paragraph 253) Statistics on Senior High School Students Discontinuing Schooling Rate | 81 |
| Attachment 7-10 (Paragraph 256) Statistics on Confirmed Cases of Bullying in Schools..... | 82 |
| Attachment 7-11 (Paragraph 263) Statistics on Participants in Various Training Projects | 82 |
| Attachment 7-12 (Paragraph 264) Implementation of “Youth On Light Project” | 83 |
| Attachment 7-13 (Paragraph 266) Statistics of Teachers and Students Participating in International Exchange Programs | 83 |
| CHAPTER 8 SPECIAL PROTECTIVE MEASURES | 85 |
| Attachment 8-1 (Paragraph 295) Statistics on Placement of Children and Youth in Institutions in Compliance with Article 52 of the “Protection of Children and Youths Welfare and Rights Act” | 85 |
| Attachment 8-2 (Paragraphs 297, 301) Statistics on Child and Juvenile Criminal Offenders and Status Offenders Investigated By District Courts | 86 |
| Attachment 8-3 (Paragraphs 297, 301) Statistics on Results of Court Trials on Child and Juvenile Protection Cases..... | 89 |
| Attachment 8-4 (Paragraph 310) Statistics on Correctional Counseling Measures for Children and Youth at Correctional Institutions | 91 |
| Attachment 8-5 (Paragraph 313) Statistics on the Number of Juveniles in Correctional Institutions for Committing Sexual Assaults | 93 |
| Attachment 8-6 (Paragraph 314) Referrals of Juvenile upon Completing Reformatory Education, Concluding or Being Exempted from the Follow-up Counseling Program..... | 94 |
| Attachment 8-7 (Paragraph 315) Statistics on Employment Services for Juveniles Leaving Correctional Institutions (Including Recommendations by Correctional Institutions and Services Provided by Public and Private Agencies)..... | 94 |
| Attachment 8-8 (Paragraph 317) Statistics on Employment Services for Disadvantaged Youth | 95 |
| Attachment 8-9 (Paragraph 324) Results of Inspections of Working Conditions Faced by Students in Part-time Jobs and Apprentices Engaged in Cooperative Education .. | 96 |
| Attachment 8-10 (Paragraph 330) Statistics on Juvenile Narcotics-Related Criminal Offenders Compiled by the National Police Agency, Ministry of the Interior | 97 |

| | |
|--|-----|
| Attachment 8-11 (Paragraph 330) Statistics on Juveniles Involved in Criminal and Protection Cases for Violations of the “Narcotics Hazards Prevention Act” and for Using or Injecting Non-Opioid Drugs or Anesthetics Other Than Ecstasy | 98 |
| Attachment 8-12 (Paragraph 330) Statistics on Juveniles Ordered to Receive Rehabilitation Treatment for Using Category One or Category Two Narcotics..... | 99 |
| Attachment 8-13 (Paragraph 332) Statistics on Drug-Using Students Reported by Schools | 99 |
| Attachment 8-14 (Paragraph 334) Number of Drug Suspects Arrested, Including Arrests of Minors. Reported by the Coast Guard Administration, Executive Yuan | 100 |
| Attachment 8-15 (Paragraph 334) Conclusion of Investigations of District Court Prosecutors’ Offices on Cases of Drug Production, Selling and Transporting..... | 100 |
| Attachment 8-16 (Paragraph 336) Statistics on the Number of Cases of Sex Trade of Children and Youth, Suspects Arrested and Child and Youth Victims Rescued by the Police..... | 101 |
| Attachment 8-17 (Paragraph 336) Statistics on Clients and Facilitators of Sex Trade Uncovered by the Police | 102 |
| Attachment 8-18 (Paragraph 336) Statistics on Cases in Violation of the “Child and Youth Sex Trade Prevention Act” Processed by District Court Prosecutors’ Offices | 103 |
| Attachment 8-19 (Paragraph 339) Statistics on Protection Placement Approved by District Courts (Juvenile Courts and Family Courts) in Accordance with the “Child and Youth Sex Trade Prevention Act” | 104 |
| Attachment 8-20 (Paragraph 340) Number of Students at Transition Schools Jointly Operated by Social Welfare Institutions and Local Authorities | 105 |
| Attachment 8-21 (Paragraph 340) Number of Students in Independently Operated Transition Schools..... | 105 |
| Attachment 8-22 (Paragraph 340) Overview of Services at Transition Schools in 2015 | 106 |
| Attachment 8-23 (Paragraph 342) Number of Students Returning Home After Attending Transition Schools..... | 107 |
| Attachment 8-24 (Paragraph 346) Number of Child or Youth Trafficking Victims Uncovered by Judicial Police Authorities and Transferred for Protection | 107 |
| Attachment 8-25 (Paragraph 357) Statistics on Subsidies for Multicultural and Native Language Learning Programs for New Immigrants and Their Children Provided by the “New Immigrants Development Fund” | 108 |
| Attachment 8-26 (Paragraph 361) Number of Classes in which Local Dialects Taught and Participating Students | 108 |
| Attachment 8-27 (Paragraph 363) Statistics on Mongolian and Tibetan Language Classes in Junior and Senior High Schools..... | 109 |
| Attachment 8-28 (Paragraph 364) Statistics on Hakka Language Proficiency Certification Achieved by Children and Youth Aged 19 or Under | 109 |

INTRODUCTION

Attachment Intro.-1(Paragraph 4) Implementation Act of the Convention on the Rights of the Child

Article 1 This Act is made to implement the 1989 Convention on the Rights of the Child (hereinafter the “Convention”), to fulfill the physical and mental development of children and youths and to substantiate the protection and promotion of the rights of the child and youth.

Article 2 The provisions of the Convention regarding the protection and promotion of the rights of the child and youth shall have the effect of domestic law.

Article 3 The laws and administrative measures to which the provisions of the Convention apply shall be in reference to the purpose of the Convention and the interpretation of the Convention by the United Nations Committee on the Rights of the Child.

Article 4 All levels of government authorities shall exercise their authority in accordance with the provisions of the Convention in relation to the protection of the rights of the child and youth, prevent illegal infringement on the rights of the child and youth, actively promote the realization of the rights of the child and youth.

Article 5 All levels of government authorities shall be responsible for planning, promoting and implementing the matters stipulated in the Convention based on the duties provided by the current laws and shall further perform reviews of such tasks. If a matter involves duties by several authorities, coordination and contact shall be carried out among these authorities. The government shall cooperate with the governments of different countries, domestic and foreign non-governmental organizations and human rights institutions in order to protect and promote the realization of the rights of the child and youth protected by the Convention.

Article 6 In order to promote tasks related to the Convention, the Executive Yuan shall invite academic experts and representatives from private organizations and relevant authorities to establish a committee for the promotion of the benefits and interests of the child and youth. Regular meetings, coordination, research, reviews and consultations shall be held and the following matters shall be performed:

1. Promotion and educational training of the Convention.

2. Supervision of the implementation of the Convention by all levels of government authorities.
3. Research and investigation on the current status of the rights of the child and youth domestically.
4. Submission of national reports.
5. Acceptance of complaints involving violations of the Convention.
6. Other matters related to the Convention.

The number of academic experts and representatives from private organizations and relevant authorities shall represent no less than 1/2 of the total number of committee members. Each gender shall be represented by at least 1/3 of the total number of committee members. If required, youth representatives may be invited.

Article 7 The government shall establish a reporting system regarding the rights of the child and youth and shall submit its first national report within two years from the implementation of this Act. Thereafter, national reports shall be filed every five years. Relevant academic experts and representatives from private organizations shall be invited to review the reports. The government shall review and study subsequent policies based on their opinions.

Article 8 The budget required for the protection of the rights of the child and youth in the implementation of the Convention by all levels of government authorities shall be allocated as a priority based on financial status and shall be implemented gradually.

Article 9 Each level of government authority shall provide a priority review list regarding the legislation and administrative measures under its jurisdiction based on the provisions of the Convention within one year from the implementation of this Act. Any laws and regulations inconsistent with the provisions of the Convention shall be corrected by addition, amendment or abolition, and administrative measures shall be improved within three years from the implementation of this Act. The legislation (amendment), revision or cancellation of the remaining laws and regulations, and improvement of administrative measures shall be completed within five years from the implementation of this Act.

Article 10 This Act shall be implemented from 20 November 2014.

Attachment Intro.-2 (Paragraph 1 -Remarks 1) Population Overview of Children and Youth

Unit: person, %

| Year | 2011 | 2012 | 2013 | 2014 | 2015 |
|--|------------|------------|------------|------------|------------|
| Total Population | 23,224,912 | 23,315,822 | 23,373,517 | 23,433,753 | 23,492,074 |
| Population of Children and Youth | 4,469,350 | 4,380,473 | 4,258,385 | 4,149,792 | 4,043,357 |
| Children and Youth % of Total Population | 19.24% | 18.79% | 18.22% | 17.71% | 17.21% |
| Population of Children Aged 0-11 | 2,628,612 | 2,555,512 | 2,500,859 | 2,468,063 | 2,457,079 |
| Children % of Total Population | 11.32% | 10.96% | 10.70% | 10.53% | 10.46% |
| Population of Youth aged 12-17 | 1,840,738 | 1,824,961 | 1,757,526 | 1,681,729 | 1,586,278 |
| Youth % of Total Population | 7.93% | 7.83% | 7.52% | 7.18% | 6.75% |
| Zero Years Old | 187,442 | 218,944 | 183,744 | 199,275 | 201,523 |
| 1 Year Old | 168,973 | 200,726 | 237,295 | 197,591 | 214,239 |
| 2 Years Old | 195,292 | 169,383 | 201,101 | 237,780 | 197,973 |
| 3 Years Old | 199,181 | 195,345 | 169,350 | 201,100 | 237,636 |
| 4 Years Old | 206,102 | 199,285 | 195,461 | 169,380 | 201,084 |
| 5 Years Old | 207,160 | 206,354 | 199,433 | 195,576 | 169,399 |
| 6 Years Old | 208,625 | 207,227 | 206,402 | 199,553 | 195,526 |
| 7 Years Old | 218,674 | 208,527 | 207,120 | 206,252 | 199,430 |
| 8 Years Old | 227,582 | 218,611 | 208,444 | 207,012 | 206,148 |
| 9 Years Old | 246,345 | 227,555 | 218,574 | 208,419 | 207,015 |
| 10 Years Old | 257,113 | 246,380 | 227,538 | 218,606 | 208,448 |
| 11 Years Old | 306,123 | 257,175 | 246,397 | 227,519 | 218,658 |
| 12 Years Old | 282,810 | 306,117 | 257,073 | 246,372 | 227,460 |
| 13 Years Old | 267,329 | 282,778 | 305,974 | 256,965 | 246,278 |
| 14 Years Old | 323,039 | 267,270 | 282,695 | 305,900 | 256,963 |
| 15 Years Old | 322,077 | 322,997 | 267,241 | 282,694 | 305,984 |
| 16 Years Old | 323,906 | 321,921 | 322,870 | 267,134 | 282,667 |
| 17 Years Old | 321,577 | 323,608 | 321,673 | 322,664 | 266,926 |

Source: Ministry of the Interior

CHAPTER 1 GENERAL MEASURES OF IMPLEMENTATION

Attachment 1-1 (Paragraph 6) Laws and Regulations on the Priority Review List

| Serial number | The names and relevant articles of Taiwan's laws and regulations | Relevant CRC articles | Competent authority |
|--------------------|--|-----------------------|------------------------------------|
| Civil Law | | | |
| 1 | Civil Code, Article 973 | Articles 1, 2 | Ministry of Justice |
| 2 | Civil Code, Article 980 | | |
| Criminal Law | | | |
| 3 | Juvenile Delinquency Act, Article 3 | Article 40 | Judicial Yuan |
| 4 | Criminal Code, Article 286 | Articles 1, 3, 6, 19 | Ministry of Justice |
| Nationality Law | | | |
| 5 | Immigration Act, Article 23 | Article 9 | Ministry of the Interior |
| 6 | Immigration Act, Article 24 | | |
| 7 | Immigration Act, Article 31 | | |
| 8 | Immigration Act, Article 32 | | |
| 9 | Immigration Act, Article 33 | | |
| 10 | Enforcement Rules for the Issuance of ROC Visas to Foreign-Passport Holders, Article 13, Paragraph 1 | | Ministry of Foreign Affairs |
| Cross-strait Law | | | |
| 11 | Act Governing Relations between the People of the Taiwan Area and the Mainland Area, Article 65 | Articles 2, 3, 9, 21 | Mainland Affairs Council |
| 12 | Regulations Governing the Residency, Long-term Residency, or Residency for Naturalization of the People of the Mainland China Area Living with a Relative in the Taiwan Area, Article 14, Paragraphs 2 and 3 | Articles 3, 9, 12, 18 | Ministry of the Interior |
| Communications Law | | | |
| 13 | Radio and Television Act, Article 21 | Articles 1, 17 | National Communications Commission |
| 14 | Draft amendment to the Radio and Television Act, Article 34-1 | | |
| 15 | Draft amendment to the Satellite Broadcasting Act, Article 28 | | |
| Social Welfare Law | | | |
| 16 | The Protection of Children and Youths Welfare and Rights Act, Article 41 | Articles 12, 31 | Ministry of Education |

| Serial number | The names and relevant articles of Taiwan's laws and regulations | Relevant CRC articles | Competent authority |
|---------------|---|-----------------------|-----------------------|
| Education Law | | | |
| 17 | Directions Governing the Composition and Operations of the National 12-Year Basic Education Curriculum Standards Council, Article 7 | Article 12 | Ministry of Education |
| 18 | Guidelines for Preventing Bullying in Schools, Article 12 | Article 19 | |

Source: Ministry of Health and Welfare

Attachment 1-2 (Paragraph 13) Central Government's Allocation of Funding for Children and Youth Groups

Unit: NT\$1,000, %

| Category/ Competent authority | Items | 2011 Statutory Budget | 2012 Statutory Budget | 2013 Statutory Budget | 2014 Statutory Budget | 2015 Statutory Budget | Remark |
|---|---|-----------------------------|-----------------------------|-----------------------------|-----------------------------|-----------------------------|--------|
| General budget (Annual expenditures) | | 1,788,411,931 | 1,938,637,325 | 1,907,567,387 | 1,916,227,714 | 1,934,636,035 | |
| Percentage for | | 1.68% | 2.08% | 2.12% | 2.34% | 2.43% | |
| Children and youth | | 30,052,522 | 40,361,771 | 40,431,801 | 44,825,395 | 46,916,239 | |
| Ministry of the Interior | | 142 | 142 | 142 | 160 | 142 | |
| National Police Agency and its affiliated agencies | Juvenile crime prevention training | 142 | 142 | 142 | 160 | 142 | |
| National Palace Museum | | 600 | 590 | 531 | 531 | 531 | |
| | Children's and parent-child activities | 600 | 590 | 531 | 531 | 531 | |
| Ministry of Culture | | 8,830 | 5,990 | 6,600 | 17,260 | 11,681 | |
| | 1. Children's Cultural Center website | 1,250 | 1,250 | 1,750 | 1,550 | 1,608 | |

| Category/ Competent authority | Items | 2011 Statutory Budget | 2012 Statutory Budget | 2013 Statutory Budget | 2014 Statutory Budget | 2015 Statutory Budget | Remark |
|-------------------------------------|--|-----------------------------|-----------------------------|-----------------------------|-----------------------------|-----------------------------|--|
| | 2. Children's and juvenile literature development project | - | - | - | 10,000 | 4,000 | The project began in 2014. |
| | 3. Program that recommends excellent extracurricular reading materials to elementary and junior high school students | 1,500 | 1,420 | 1,750 | 1,760 | 2,019 | |
| | 4. Plan to promote Taiwanese literature to children and youth | 1,600 | 40 | 20 | 850 | 1,000 | |
| | 5. Children's folklore and folk game exhibitions | 2,000 | - | - | - | - | The National Museum of Taiwan History, supervised by the Ministry of Culture, began operation in 2012. The museum suspended its folklore and folk game exhibitions after setting up a children's hall. |
| | 6. Theater promotion and education program | - | 800 | 600 | - | - | The National Museum of Taiwan History suspended |

| Category/ Competent authority | Items | 2011 Statutory Budget | 2012 Statutory Budget | 2013 Statutory Budget | 2014 Statutory Budget | 2015 Statutory Budget | Remark |
|--|--|-----------------------------|-----------------------------|-----------------------------|-----------------------------|-----------------------------|---|
| | | | | | | | its theater promotion and education program for children and youth after launching special exhibitions on Taiwanese women and women's oral history. |
| | 7. Aesthetics education program | 2,480 | 2,480 | 2,480 | 2,345 | 2,345 | |
| | 8. Children's crafts summer camp | - | - | - | 755 | 709 | The summer camp began in 2014. |
| Council of Indigenous Peoples | | 202,336 | 198,417 | 207,430 | 213,351 | 213,350 | |
| | 1. After-school counseling and education programs for disadvantaged students and indigenous students | 3,000 | 7,482 | 3,482 | 10,000 | 10,000 | |
| | 2. Scholarships for indigenous students in elementary and junior high schools | 56,126 | 61,035 | 61,035 | 61,000 | 61,000 | |

| Category/ Competent authority | Items | 2011 Statutory Budget | 2012 Statutory Budget | 2013 Statutory Budget | 2014 Statutory Budget | 2015 Statutory Budget | Remark |
|-------------------------------------|---|-----------------------------|-----------------------------|-----------------------------|-----------------------------|-----------------------------|---|
| | 3. Pre-school education subsidies for indigenous children in indigenous and urban areas | 135,710 | 127,150 | 131,368 | 131,350 | 131,350 | |
| | 4. Subsidies for child welfare institutions | 7,500 | 2,750 | 11,545 | 11,001 | 11,000 | In accordance with the "Early Childhood Education and Care Act," a program has been implemented since 2013 to establish centers that provide education and care services for pre-school indigenous children. The centers rely on the mutual aid provided by the communities or tribal villages. |

| Category/ Competent authority | Items | 2011 Statutory Budget | 2012 Statutory Budget | 2013 Statutory Budget | 2014 Statutory Budget | 2015 Statutory Budget | Remark |
|---|--|-----------------------------|-----------------------------|-----------------------------|-----------------------------|-----------------------------|------------------------------|
| Hakka Affairs Council | | 46,180 | 58,050 | 74,050 | 64,300 | 70,300 | |
| | 1. Hakka language programs at schools | 46,180 | 50,700 | 60,050 | 50,300 | 56,300 | |
| | 2. Hakka language certification for pre-school children | - | 7,350 | 14,000 | 14,000 | 14,000 | Certification began in 2012. |
| Ministry of Health and Welfare | | 7,391,675 | 10,777,660 | 8,170,999 | 9,900,662 | 10,783,464 | |
| | 1. Subsidies for the early intervention treatment of developmentally delayed children | 107,306 | 101,331 | 86,767 | 72,822 | 80,919 | |
| | 2. Care, counseling and family treatment services for children and youth who are in need of protection or who come from high-risk families | 109,000 | 103,550 | 93,195 | 97,061 | 82,988 | |
| | 3. Community-based care for children and youth from disadvantaged families | 35,000 | 37,000 | 31,281 | 23,493 | 20,364 | |
| | 4. Medical aid program for children and youth | 2,000,000 | 2,000,000 | 2,860,566 | 3,065,840 | 3,114,553 | |

| Category/ Competent authority | Items | 2011 Statutory Budget | 2012 Statutory Budget | 2013 Statutory Budget | 2014 Statutory Budget | 2015 Statutory Budget | Remark |
|-------------------------------------|---|-----------------------------|-----------------------------|-----------------------------|-----------------------------|-----------------------------|--|
| | 5. Family child care management and child care subsidies | 590,156 | 891,765 | 891,765 | 960,860 | 1,213,688 | |
| | 6. Other child and youth welfare | 424,539 | 3,478,389 | 3,190,387 | 4,263,313 | 4,853,261 | |
| | 7. Disease prevention and treatment and healthcare services for children and youth; fluoride therapy for children | 392,658 | 370,686 | 367,741 | 767,976 | 768,394 | |
| | 8. Subsidies for the Vaccine Fund for child vaccine procurement and vaccination | 531,341 | 504,774 | 649,297 | 649,297 | 649,297 | |
| | 9. Various grants for early childhood education | 3,201,675 | 3,290,165 | - | - | - | Taiwan merged its kindergartens and nursery schools in 2013. Since then, the Ministry of Education has been in charge of supervising early childhood education programs. |

| Category/ Competent authority | Items | 2011 Statutory Budget | 2012 Statutory Budget | 2013 Statutory Budget | 2014 Statutory Budget | 2015 Statutory Budget | Remark |
|-------------------------------------|---|-----------------------------|-----------------------------|-----------------------------|-----------------------------|-----------------------------|--|
| Ministry of Education | | 21,574,787 | 28,466,143 | 31,157,164 | 33,783,182 | 35,003,710 | |
| | 1. Funding for youth education and counseling | 399,839 | 1,289,573 | 1,354,348 | 1,661,630 | 2,014,553 | The program is also open to people aged 18 or over. |
| | 2. Efforts to develop and improve pre-school education | 4,085,525 | 5,184,169 | 9,055,177 | 9,547,177 | 9,590,469 | |
| | 3. Efforts to support schools and students in disadvantaged areas | 360,144 | 360,365 | 283,215 | 366,027 | 363,027 | |
| | 4. Academic counseling for disadvantaged students | 834,473 | 1,064,473 | 1,204,473 | 1,490,628 | 1,490,628 | |
| | 5. Efforts to implement technical education | 292,925 | 342,925 | 342,925 | 342,925 | 313,795 | |
| | 6. Education subsidies for children from families in hardship | 142,037 | 114,000 | 106,600 | 106,500 | 111,500 | The program is also open to people aged 18 or over. |
| | 7. Learning activities for foreign spouses and their children | 91,633 | 78,021 | 73,866 | 73,866 | 79,866 | The program is also open to people aged 18 or over. |
| | 8. Tuition aid for senior and vocational high school students | 11,447,654 | 16,352,060 | 15,056,003 | 16,497,872 | 17,198,065 | Item 12 (Repeated parts in Item 8 and Item 11 were adjusted) was |

| Category/ Competent authority | Items | 2011 Statutory Budget | 2012 Statutory Budget | 2013 Statutory Budget | 2014 Statutory Budget | 2015 Statutory Budget | Remark |
|-------------------------------------|---|-----------------------------|-----------------------------|-----------------------------|-----------------------------|-----------------------------|--|
| | | | | | | | added to the program in 2014. Adjustments were made to Year 2011, 2012 and 2013 to unify the basis for comparison. |
| | 9. Expanded assistance to financially disadvantaged students in colleges and universities | 1,360,000 | 1,000,000 | 1,000,000 | 1,000,000 | 1,000,000 | The program is also open to people aged 18 or over. |
| | 10. Expansion of school lunch program | 2,000,000 | 2,100,000 | 2,100,000 | 2,100,000 | 2,300,000 | |
| | 11. Waiver or reduction of tuition and other fees for indigenous students | 1,092,451 | 1,112,451 | 1,112,451 | 1,128,451 | 1,073,701 | 1. The program is also open to people aged 18 or over. 2. The program's 2013 budget was originally included in Item 8, but adjustments were made to |

| Category/ Competent authority | Items | 2011 Statutory Budget | 2012 Statutory Budget | 2013 Statutory Budget | 2014 Statutory Budget | 2015 Statutory Budget | Remark |
|---|---|-----------------------------|-----------------------------|-----------------------------|-----------------------------|-----------------------------|---|
| | | | | | | | unify the basis for comparison. |
| | 12. Repeated parts in Item 8 and Item 11 were adjusted | -531,894 | -531,894 | -531,894 | -531,894 | -531,894 | |
| Ministry of Justice | | 753,226 | 784,700 | 742,377 | 776,365 | 770,682 | |
| | 1. Expenses for handling and researching cases involving women and young children | 400 | 400 | 400 | 390 | 300 | |
| | 2. Expenses for preventing and controlling children and youth sex trafficking | 3,149 | 3,187 | 2,933 | 2,946 | 2,996 | |
| | 3. Funding for juvenile correctional institutions | 749,677 | 781,113 | 739,044 | 773,029 | 767,386 | |
| Ministry of Science and Technology | | - | - | 1,320 | 3,760 | 3,760 | |
| | Funding for youth education and counseling | - | - | 1,320 | 3,760 | 3,760 | Since 2012, the funds have been used to employ psychological counselors. In the past, the Ministry of Education subsidized the annual funding, so |

| Category/ Competent authority | Items | 2011 Statutory Budget | 2012 Statutory Budget | 2013 Statutory Budget | 2014 Statutory Budget | 2015 Statutory Budget | Remark |
|---|---|-----------------------------|-----------------------------|-----------------------------|-----------------------------|-----------------------------|---|
| Overseas Community Affairs Council | | 69,616 | 65,079 | 53,780 | 54,479 | 53,119 | no budget was allocated by the Ministry of Science and Technology. |
| | Plan that assists overseas youth in visiting Taiwan, experiencing the local culture and participating in activities | 69,616 | 65,079 | 53,780 | 54,479 | 53,119 | The program is also open to people aged 18 or over. |
| Veterans Affairs Council | | 5,130 | 5,000 | 5,000 | 3,323 | 5,500 | |
| | Expansion of school lunch program | 5,130 | 5,000 | 5,000 | 3,323 | 5,500 | |
| Ministry of Labor | | - | - | 12,408 | 10,022 | - | |
| | Pre-employment training for youth | - | - | 12,408 | 10,022 | - | 1. Before 2013, the program was administered by the Youth Development Administration. 2. Between 2013 and 2014, the program was also |

| Category/ Competent authority | Items | 2011 Statutory Budget | 2012 Statutory Budget | 2013 Statutory Budget | 2014 Statutory Budget | 2015 Statutory Budget | Remark |
|-------------------------------------|-------|-----------------------------|-----------------------------|-----------------------------|-----------------------------|-----------------------------|---|
| | | | | | | | <p>open to people aged 18 or over.</p> <p>3. From 2015, budgets were no longer allocated for the program, as training sessions were not limited to teenagers. The sessions included people from other age groups, in an attempt to simulate the real world experience of job seeking, and to raise post-training employment rate.</p> |

**Source: Provided by central government agencies, and compiled by the Directorate-General of Budget, Accounting and Statistics,
Executive Yuan**

Attachment 1-3 (Paragraphs 14, 203, 230, 266, 290, 353) International Assistance and Cooperation

1. Examples of Taiwan's international humanitarian assistance (Paragraph 14):

- a. In 2011, through the Vatican's Pontifical Council Cor Unum, Taiwan's embassy to the Holy See provided relief aid to famine victims (including children) in the Horn of Africa; to earthquake victims (including children) in Japan and Turkey; and to flood victims (including children) in Brazil, El Salvador, the Philippines, Bangladesh and Italy's Genoa and Sicily.
- b. In 2012, through the Vatican's Pontifical Council Cor Unum, Taiwan's embassy to the Holy See provided relief aid to earthquake victims (including children) in northern Italy; to refugees (including children) in war-torn areas in the Middle East; and to disaster victims (including children) in Africa.
- c. In 2013, through the Vatican's Pontifical Council Cor Unum, Taiwan's embassy to the Holy See provided relief aid to flood victims (including children) in Indonesia, Argentina, Mexico and other countries.
- d. In 2014, Taiwan's embassy to the Holy See cooperated with the Holy See to provide relief aid to orphans in Eritrea in Northeast Africa; to refugees (including children) in northern Iraq; and to Ebola victims (including children) in West Africa. Taiwan also provided aid to flood victims (including children) in the Federation of Bosnia and Herzegovina in 2014, and helped victims reconstruct their homes.
- e. In 2015, through the Vatican's Pontifical Council Cor Unum, Taiwan's embassy in the Holy See provided relief aid to earthquake victims (including children) in Nepal. Taiwan's embassy also cooperated with the Sovereign Military Order of Malta to fund programs for leprosy patients in hospitals in Ho Chi Minh City, Vietnam. In addition, Taiwan also participated in the humanitarian project "Make a WISH to the Sovereign Order of Malta," which was organized by the Embassy of the Sovereign Military Order of Malta to the Republic of Serbia.

2. Examples of small charitable donations from Taiwan to Central and Eastern European countries, and cooperation on develop projects between Taiwan and these countries (Paragraph 14):

- a. From 2010 to 2013, Taiwan launched small aid programs in collaboration with Central and Eastern European countries, including Greece, Czech Republic, Slovakia, Hungary, Poland, Lithuania, Latvia, Estonia, Croatia, Romania and Bulgaria. The programs

included projects on child welfare and economic, social, cultural and educational development.

b. 2014 Examples:

- i. Funded computers for orphanages in Poland's Włodawa and Chełm, and for an elementary school in Czacz in the country.
- ii. Funded computers for elementary schools in Aetolia-Acarnania and Karditsa in Greece.
- iii. Funded computers, desks and chairs for a Catholic school in Versmes, Lithuania, and funded teaching equipment for a school in Kaunas in the country.
- iv. Funded computers for schools in Cernica and Balaceanca in Romania.
- v. Provided funding to build a natural science classroom for Juro Janoska primary school in Slovakia, and funded information technology equipment for Kozarovce primary school in Nitra, Slovakia.
- vi. Provided funding to a special education school in Svitani, Czech Republic, for the purchasing of low-floor school buses. Funded computers for a primary school in Lysolaje, Prague.
- vii. Funded computers for an elementary school in Budapest, and classroom equipment for a kindergarten in V County and an elementary school in Aszod, Pest County, Hungary.
- viii. Provided funding to The Latvian Institute to hold summer camps for disabled children and youth, and funded hydrotherapy treatment for disabled children and youth in Alūksne, Latvia.
- ix. Provided funding for the purchasing of preschool nursery equipment in Aste, Estonia.

c. 2015 Examples:

- i. Funded equipment for orphanages in Albania.
- ii. Funded computers and playground facilities for a school in Trnava, Slovakia, and funded facilities for the recreational area and children's playground in public parks in Kosice, Slovakia.
- iii. Funded traditional costumes for kindergarten and elementary school children in Hungary.
- iv. Funded the purchasing of 33 computers for two schools in the Romanian capital of Bucharest.

3. Examples of assisting local child and youth welfare groups in partnering with international non-governmental organizations (Paragraph 14):

- a. In 2011, the Sunshine Social Welfare Foundation and the Asociación Pro Niños Quemados de Nicaragua (APROQUEN) jointly organized a program to train rehabilitation staff for burn victims in Central America. A three-year training program took place from 2012 to 2014, during which APROQUEN invited professional rehab staff from five of Taiwan's diplomatic allies -- Nicaragua, Guatemala, Honduras, Panama and the Dominican Republic – to receive further rehab training at the Sunshine Social Welfare Foundation, to benefit child burn victims in Central America.
- b. In September 2012, the Taiwan government assisted ECPAT Taiwan (End Child Prostitution in Asian Tourism) in inviting Jaap E. Doek, former chairperson of the United Nations Committee on the Rights of the Child, and others to visit Taiwan to meet members of local child and youth welfare groups. In a meeting with Doek, Taiwan President Ma Ying-jeou stressed that Taiwan attached great importance to promoting and protecting child and youth welfare and rights.
- c. From 2012 to 2013, the government assisted Orbis Taiwan in cooperating with Orbis International to organize an ophthalmic medical assistance program for children in Nepal.
- d. In 2013, the government assisted representatives of Taiwan's Garden of Hope Foundation in attending a meeting in Bangkok, Thailand. At the meeting, they engaged in conversations with ASEAN law enforcement agencies, anti-corruption agencies, policy makers, and NGOs and business representatives on such topics as protecting national assets and jointly combating illegal transactions, in an effort to build a network to combat transnational human trafficking. The same year, the government assisted the Taiwan Fund for Children and Families in inviting Camilla Sharshekeeva, former Minister of Education in Kyrgyzstan, and Emil Umetaliev, former Minister of Economic Development in Kyrgyzstan, to visit Taiwan. From 2013 to 2015, the government also assisted the Garden of Hope Foundation in promoting the Asian Girl Rights Alliance, a three-year international project.
- e. In 2014:
 - i. The government assisted ECPAT Taiwan in attending the General Assembly of the International Association of Internet Hotlines (INHOPE) in Poland.
 - ii. The government assisted the Garden of Hope Foundation in organizing the award ceremonies of the 12th Formosan Girl Awards and 2nd Asian Girl Human Rights Awards.
 - iii. Taiwan International Health Action (TaiwanIHA), jointly established by the

Ministry of Health and Welfare and the Ministry of Foreign Affairs, cooperated with Hualien Tzu Chi Hospital, the Association of Medical Doctors of Asia and the Provincial General Hospital in Badulla, Sri Lanka, to provide dental care in the Badulla area. In addition to offering treatment -- ultrasonic scaling, tooth filling and fluoride varnishing -- for approximately 200 students in two schools, the medical team also taught the children how to maintain oral hygiene and brush their teeth the proper way. TaiwanIHA also donated dental cleaning kits, dental chairs and other medical supplies to the local people.

- iv. From 2014 to 2020, the government will assist Orbis Taiwan and Orbis International in implementing a project for the prevention of blindness in children in West Bengal, India.

f. In 2015:

- i. The government assisted the Garden of Hope Foundation in organizing the Asian Girls Rights Conference on Oct. 7, 2015. The foundation announced the establishment of the Secretariat of the Asian Girl Rights Alliance in Taiwan, and heads of 18 organizations from Nepal, India, Bangladesh, Indonesia, Pakistan, Cambodia, Armenia, the Philippines, Japan, Mongolia and the United Kingdom attended the announcement ceremony. The representatives pledged to work to improve Asian girls' health, education and personal safety and address the problem of child marriage in Asia. They expressed hope that the coalition will be able to exert influence on government policies in the member states in the future, and protect the rights of girls on a comprehensive level.
- ii. The government assisted ECPAT Taiwan in hosting an international forum on the sexual exploitation of children and youth on the Internet. Speakers include John Carr, a senior consultant on child Internet safety for ECPAT International. Organizers of the forum hoped to introduce the latest international development and knowledge on the issue to Taiwan, to help Taiwan address the problem of sexual exploitation of children and youth in the cyber space. Training courses were also offered to strengthen the skills of law enforcement officers in detecting various forms of cybercrimes, so that they are able to prevent and control such crimes more effectively.
- iii. The government assisted World Vision Taiwan in launching a child sponsorship program that encourages Taiwanese to adopt poor children from 13 countries, including Taiwan's diplomatic allies in Latin America, Africa and the South Pacific.

- iv. The government assisted Taiwan Kiwanis Children's Foundation, Bliss and Wisdom Foundation, Taiwanese Women's Entrepreneurs Association and the Red Cross Society of the Republic of China (Taiwan) in raising funds to purchase 1,400 stationery sets, which were given as gifts to poor children from Taiwan's diplomatic allies in the South Pacific, along with the crayons, pencils, footballs, erasers, rulers and pencil sharpeners donated by Rotary clubs.

4. International medical assistance projects for the physically and mentally disabled

(Paragraph 203):

| Year and Month | Project Name | Taiwan NGO | International NGO | Project Description |
|-----------------|--|--|---|--|
| 2009.12-2012.12 | Project to build a hospital and educational training center for children with disabilities in Tỉnh Hải Dương, Vietnam. | Eden Social Welfare Foundation | Handicaps Enfants Sans Frontiere (HESF) | <ol style="list-style-type: none"> 1. The ministry provided 50,000 euros in funding for the purchase of medical equipment. Taiwan's representative office in France signed a memorandum of understanding with HESF. 2. HESF spent three years (2009-2012) building the children's hospital and educational training center in Tỉnh Hải Dương, Vietnam. The ministry also asked HESF to make it a priority to cooperate with Eden Social Welfare Foundation on education and vocational training for the disabled. |
| 2010.12-2011.12 | Mongolia disadvantaged children's health, nutrition and medical services program | Taiwan Fund for Children and Families (TFCF) | TFCF's Mongolia Branch Office, Mongolian Association for Children with Cleft Lip and Palate, and Mongolia's National Center for Maternal and Child Health | <ol style="list-style-type: none"> 1. The ministry provided a subsidy of US\$20,000. 2. Medical teams traveled to rural provinces of Mongolia (with a distance of over 700 kilometers from the capital) to treat children with cleft lip and palate, perform health checks and nutritional screenings on them, and provide health and nutritional supplements for children with developmental delay in these areas. The project also subsidized the costs for disadvantaged children to travel to the capital or other countries for medical treatment. The project provided funding for 840 children. |
| 2012-2013 | Ophthalmic medical assistance program for children in Nepal | Orbis Taiwan | Orbis International | <ol style="list-style-type: none"> 1. The ministry provided US\$100,000 in funding for the project. 2. The project included a children's eye center and three sub-centers to treat diseases of the eye. The project provided |

| Year and Month | Project Name | Taiwan NGO | International NGO | Project Description |
|----------------|--------------|------------|-------------------|---|
| | | | | training for 14 ophthalmologists. It helped 1,050 children correct their vision, 320 children undergo eye surgeries and provided sight screening services to 120,000 children under the age of 15 in Kathmandu. |

5. International assistance projects on child and youth health, protection and medical care (Paragraph 230):

Taiwan implemented a project in 2012 and 2013 that encouraged nurses and midwives from The Gambia to visit Taiwan to receive training in midwifery and learn ways to improve their health stations, to reduce the mortality rate of pregnant women and newborn babies in The Gambia.

6. International assistance projects on child and youth educational and vocational training (Paragraph 266):

The government provided funding to support a rural educational program at the Thailand-Myanmar border. It also promoted Chinese-language teaching in elementary schools in Malawi, Lesotho and Swaziland, and participated in a program called Children in Mines and Quarries: Understand and Act, which was jointly launched by the United Nations Children's Fund (UNICEF) and Terre des Hommes Lausanne. In addition, the government donated money to pay for the tuition fees, meals, books, stationary and uniform costs of Burkina Faso children. It also helped out-of-school children (who are above primary school age) improve their literacy level and make the back-to-school transition. It also helped reduce the number of children who are exploited and reduce illiteracy among young people.

7. International child and youth refugees assistance projects (Paragraph 290):

The government has funded the Chinese Association for Human Rights' Taipei Overseas Peace Service (TOPS) for four years -- in 2009, 2011, 2013 and 2015. TOPS and The Border Consortium jointly launched a program to offer nutritious lunch to kindergarten refugee children at the Thailand-Myanmar border.

8. Important projects between Taiwan and other countries over the past five years in preventing children from being abducted or trafficked (Paragraph 353):

- i. Through the Tamkeen Center for Legal Aid and Human Rights in Jordan, Taiwan was able to cooperate with anti-human trafficking NGOs in the Middle East and North Africa.
- ii. Provided funding to the Garden of Hope Foundation, Chinese Christian Herald Crusades, and Fullness in Christ Fellowship to set up a shelter for girls in the Cambodian capital of Phnom Penh.
- iii. In 2015, the government donated US\$50,000 to the children's rights NGO Bachpan Bachao Andolan, which was founded by Nobel Peace Prize Laureate Kailash Satyarthi, to support the NGO's program titled "Care and Protection of Survivors of Trafficking and Forced Labour."

Source: Ministry of Foreign Affairs & Ministry of Health and Welfare

Attachment 1-4 (Paragraph22) Results of CRC Educational Training

Unit: sessions, trainees, NT\$

| Year | Government Agencies | | Number of Training Sessions Held | Number of Trainees | Training Costs |
|---------------------------|---------------------|---|----------------------------------|--------------------|----------------|
| 2014 | Central-level | Judicial Yuan | 1 | 77 | 4,800 |
| | | Ministry of Justice | 3 | 243 | 800 |
| | | National Palace Museum | 2 | 14 | - |
| | Local-level | Changhua County Government | 4 | 300 | 54,000 |
| | | Pingtung County Government | 1 | 100 | 146,795 |
| | Total | | 11 | 734 | 206,395 |
| 2015 | Central-level | Judicial Yuan | 12 | 761 | 76,800 |
| | | Control Yuan | 1 | 42 | 3,200 |
| | | Ministry of the Interior | 3 | 160 | 24,000 |
| | | Ministry of Finance | 2 | 778 | 5,000 |
| | | Ministry of Education | 2 | 420 | 1,015,840 |
| | | Ministry of Justice | 79 | 1,455 | 12,800 |
| | | Ministry of Labor | 1 | 70 | 3,200 |
| | | Ministry of Health and Welfare | 21 | 1,100 | 1,079,387 |
| | | Ministry of Culture | 1 | 63 | 3,200 |
| | | Ministry of Science and Technology | 1 | 33 | - |
| | | Mainland Affairs Council | 2 | 133 | 10,000 |
| | | Veterans Affairs Council | 3 | 143 | - |
| | | Hakka Affairs Council | 1 | 100 | 850,000 |
| | | Public Construction Commission, Executive Yuan | 2 | 330 | - |
| | | Directorate-General of Personnel Administration, Executive Yuan | 2 | 199 | 9,700 |
| | | National Palace Museum | 1 | 8 | - |
| | | Central Election Commission | 1 | 45 | 3,600 |
| | Local-level | Taipei City Government | 3 | 103 | 14,400 |
| | | New Taipei City Government | 1 | 66 | 8,200 |
| | | Taichung City Government | 3 | 238 | 48,520 |
| Tainan City Government | | 1 | 52 | 15,345 | |
| Kaohsiung City Government | | 3 | 4,616 | 528,241 | |

| Year | Government Agencies | Number of Training Sessions Held | Number of Trainees | Training Costs |
|------|----------------------------|----------------------------------|--------------------|----------------|
| | Yilan County Government | 1 | 16 | 10,632 |
| | Miaoli County Government | 2 | 1,800 | 600,000 |
| | Changhua County Government | 43 | 12,034 | 959,147 |
| | Nantou County Government | 64 | 11,543 | - |
| | Chiayi County Government | 1 | 23 | - |
| | Pingtung County Government | 4 | 1,220 | 146,212 |
| | Taitung County Government | 1 | 630 | - |
| | Hualien County Government | 6 | 1,520 | 90,000 |
| | Keelung City Government | 1 | 50 | 19,840 |
| | Total | 269 | 39,751 | 5,537,264 |

Source: Ministry of Health and Welfare

CHAPTER 3 GENERAL PRINCIPLES

Attachment 3-1 (Paragraph 69) Number of Pregnant Senior High School Students Who Remain in School

Unit: person, %

| School Year | Total Number of Pregnant Students | Number of Pregnant Students Remaining in School | Ratio |
|-------------|-----------------------------------|---|-------|
| 2012 | 297 | 211 | 71.04 |
| 2013 | 181 | 164 | 90.61 |
| 2014 | 295 | 242 | 82.03 |

Source: Ministry of Education

Note: Statistics first compiled in 2012. The 2015 school year ended on July 31, 2016, and statistics for that year will be available in January 2017.

Attachment 3-2 (Paragraph 74) Number of Live Births and Stillbirths Reported to Authorities

Unit: person

| Year | Total Births | Live Births | Stillbirths |
|------|--------------|-------------|-------------|
| 2011 | 200,708 | 198,387 | 2,321 |
| 2012 | 237,043 | 234,575 | 2,468 |
| 2013 | 197,502 | 195,251 | 2,251 |
| 2014 | 214,234 | 211,734 | 2,500 |
| 2015 | 216,229 | 213,714 | 2,515 |

Source: Ministry of Health and Welfare

Note: A stillbirth is defined here as a baby born with no signs of life at or after 20 weeks of gestation, or with a birth weight of at least 500 grams.

Attachment 3-3 (Paragraph 74) Infant Deaths and Mortality Rate

Unit: person, per 100,000 live births

| Year | Infant Deaths | Mortality Rate |
|------|---------------|----------------|
| 2011 | 832 | 419.5 |
| 2012 | 860 | 366.6 |
| 2013 | 767 | 393.5 |
| 2014 | 761 | 360.0 |
| 2015 | 881 | 413.4 |

Source: Ministry of Health and Welfare

Attachment 3-4 (Paragraph 74) Top 10 Causes of Infant Deaths

Unit: person, per 100,000 live births

| Rank | 2011 | | | 2012 | | | 2013 | | | 2014 | | | 2015 | | |
|------|--|--------|----------------|--|--------|----------------|--|--------|----------------|--|--------|----------------|--|--------|----------------|
| | Cause of Death | Deaths | Mortality Rate | Cause of Death | Deaths | Mortality Rate | Cause of Death | Deaths | Mortality Rate | Cause of Death | Deaths | Mortality Rate | Cause of Death | Deaths | Mortality Rate |
| 1 | All causes | 832 | 419.5 | All causes | 860 | 366.6 | All causes | 767 | 393.5 | All causes | 761 | 360.0 | All causes | 881 | 413.4 |
| 2 | Congenital malformations, deformations and chromosomal abnormalities | 209 | 105.4 | Congenital malformations, deformations and chromosomal abnormalities | 194 | 82.7 | Congenital malformations, deformations and chromosomal abnormalities | 165 | 84.6 | Congenital malformations, deformations and chromosomal abnormalities | 148 | 70.0 | Congenital malformations, deformations and chromosomal abnormalities | 180 | 84.5 |
| 3 | Respiratory conditions originating in the perinatal period | 134 | 67.6 | Respiratory conditions originating in the perinatal period | 136 | 58.0 | Respiratory conditions originating in the perinatal period | 115 | 59.0 | Respiratory conditions originating in the perinatal period | 102 | 48.2 | Respiratory conditions originating in the perinatal period | 117 | 54.9 |
| 4 | Infections specific to the perinatal period | 41 | 20.7 | Infections specific to the perinatal period | 52 | 22.2 | Disorders related to length of gestation and fetal growth | 50 | 25.6 | Accidents and adverse effects | 57 | 27.0 | Disorders related to length of gestation and fetal growth | 60 | 28.2 |
| 5 | Disorders related to length of gestation and fetal growth | 37 | 18.7 | Accidents and adverse effects | 44 | 18.8 | Sudden infant death syndrome (SIDS) | 48 | 24.6 | Disorders related to length of gestation and fetal growth | 42 | 19.9 | Accidents and adverse effects | 46 | 21.6 |
| 6 | Accidents and adverse effects | 35 | 17.6 | Sudden infant death syndrome (SIDS) | 42 | 17.9 | Accidents and adverse effects | 45 | 23.1 | Infections specific to the perinatal period | 32 | 15.1 | Infections specific to the perinatal period | 36 | 16.9 |
| 7 | Sudden infant death syndrome (SIDS) | 34 | 17.1 | Disorders related to length of gestation and fetal growth | 40 | 17.1 | Infections specific to the perinatal period | 31 | 15.9 | Sudden infant death syndrome (SIDS) | 30 | 14.2 | Sudden infant death syndrome (SIDS) | 32 | 15.0 |

| Rank | 2011 | | | 2012 | | | 2013 | | | 2014 | | | 2015 | | |
|------|--|--------|----------------|--|--------|----------------|--|--------|----------------|--|--------|----------------|--|--------|----------------|
| | Cause of Death | Deaths | Mortality Rate | Cause of Death | Deaths | Mortality Rate | Cause of Death | Deaths | Mortality Rate | Cause of Death | Deaths | Mortality Rate | Cause of Death | Deaths | Mortality Rate |
| 7 | Hemorrhagic and hematological disorders of fetuses and newborns. | 28 | 14.1 | Hemorrhagic and hematological disorders of fetuses and newborns. | 29 | 12.4 | Diseases of heart (except hypertensive diseases) | 22 | 11.3 | Hemorrhagic and hematological disorders of fetuses and newborns. | 23 | 10.9 | Hemorrhagic and hematological disorders of fetuses and newborns. | 28 | 13.1 |
| 8 | Fetuses and newborns affected by the mother's condition and complications from pregnancy and childbirth. | 17 | 8.6 | Fetuses and newborns affected by the mother's condition and complications from pregnancy and childbirth. | 20 | 8.5 | Fetuses and newborns affected by the mother's condition and complications from pregnancy and childbirth. | 13 | 6.7 | Pneumonia | 20 | 9.5 | Diseases of heart (except hypertensive diseases) | 19 | 8.9 |
| 9 | Other disorders of brain | 10 | 5.0 | Diseases of heart (except hypertensive diseases) | 19 | 8.1 | Other disorders of brain | 10 | 5.1 | Diseases of heart (except hypertensive diseases) | 17 | 8.0 | Pneumonia | 17 | 8.0 |
| 10 | Sepsis | 9 | 4.5 | Pneumonia | 13 | 5.5 | Hemorrhagic and hematological disorders of fetuses and newborns. | 10 | 5.1 | Fetuses and newborns affected by the mother's condition and complications from pregnancy and childbirth. | 17 | 8.0 | Other disorders of brain | 14 | 6.6 |

Source: Ministry of Health and Welfare

Attachment 3-5 (Paragraph 74) Mid-year Populations, Deaths and Mortality Rates of Minors

Unit: person, per 100,000 persons

| Year | Mid-year Populations | | | | | Deaths | | | | Mortality Rates by Age Group | | | |
|------|------------------------|-----------|-----------|-----------|-------|---------|----------|-----------|-------|------------------------------|----------|-----------|--|
| | Age 0 (Live births) | Age 1-5 | Age 6-11 | Age 12-17 | Age 0 | Age 1-5 | Age 6-11 | Age 12-17 | Age 0 | Age 1-5 | Age 6-11 | Age 12-17 | |
| 2011 | 198,348 | 976,708 | 1,464,462 | 1,840,738 | 832 | 252 | 178 | 402 | 419.5 | 25.3 | 11.9 | 21.6 | |
| 2012 | 234,599 | 971,093 | 1,365,475 | 1,824,691 | 860 | 247 | 174 | 412 | 366.6 | 25.4 | 12.3 | 22.5 | |
| 2013 | 194,939 | 1,002,640 | 1,314,475 | 1,757,526 | 767 | 193 | 180 | 388 | 393.5 | 19.6 | 13.4 | 21.7 | |
| 2014 | 211,399 | 1,001,427 | 1,267,361 | 1,681,729 | 761 | 204 | 178 | 326 | 360.0 | 20.4 | 13.8 | 19.0 | |
| 2015 | 213,093 | 1,010,879 | 1,251,293 | 1,634,004 | 881 | 203 | 120 | 287 | 413.4 | 20.1 | 9.6 | 17.6 | |

Source: Ministry of Health and Welfare

Note: Mid-year population figures were based on the total population at the end of each year compiled by the Ministry of the Interior. For example, the mid-year population of 2015 = (total population of 2015 at end of year + total population of 2014 at end of year)/2

Attachment 3-6 (Paragraph 74) Rate of Deaths Caused by Accidents Among Minors

Unit: person, per 100,000 persons

| Year | Under the Age of 1 | | Aged 1 or Over but Under 18 | |
|------|--------------------|----------------|-----------------------------|----------------|
| | Number of Deaths | Mortality Rate | Number of Deaths | Mortality Rate |
| 2011 | 35 | 17.6 | 252 | 5.8 |
| 2012 | 44 | 18.8 | 246 | 5.8 |
| 2013 | 45 | 23.1 | 224 | 5.4 |
| 2014 | 57 | 27.0 | 218 | 5.4 |
| 2015 | 46 | 21.6 | 205 | 5.5 |

Source: Ministry of Health and Welfare

Attachment 3-7 (Paragraph 74) Suicide Rate among Minors

Unit: person, per 100,000 persons

| Year | Number of Deaths | Mortality Rate |
|------|------------------|----------------|
| 2011 | 24 | 0.5 |
| 2012 | 30 | 0.7 |
| 2013 | 20 | 0.5 |
| 2014 | 14 | 0.3 |
| 2015 | 23 | 0.6 |

Source: Ministry of Health and Welfare

CHAPTER 5 FAMILY ENVIRONMENT AND ALTERNATIVE CARE

Attachment 5-1 (Paragraph 137) Statistics on Family Education Activities, Family Education Counseling Hotlines, and Individualized Parenting Educational Services Sponsored by Family Educational Centers of Local Governments, and Statistics on Parenting Education Services Sponsored by Social Affairs Departments

Unit: event, person/time, case

| Year | Family Education Activities | | Family Education Counseling Hotlines | Individualized Parenting Educational Services | | Parenting Education Services | |
|------|-----------------------------|---------------|--------------------------------------|---|-------------------|------------------------------|---------------|
| | Events | Beneficiaries | Cases | Number of Student Cases | Benefited Parents | Events | Beneficiaries |
| 2011 | 8,996 | 1,275,028 | 8,896 | 415 | 536 | - | - |
| 2012 | 7,221 | 1,086,561 | 9,050 | 572 | 843 | 593 | 21,768 |
| 2013 | 11,965 | 1,078,509 | 8,393 | 550 | 1,035 | 1,381 | 37,994 |
| 2014 | 11,434 | 721,484 | 10,333 | 528 | 855 | 864 | 56,250 |
| 2015 | 17,809 | 1,227,369 | 10,315 | 399 | 729 | 1,056 | 50,976 |

Sources: Ministry of Education, Ministry of Health and Welfare

Note: Parenting educational services are provided in compliance with the “Implementation Plan of Allowances for Unemployed Parents with Children under the Age of 2” adopted in 2012. Local governments receive subsidies to coordinate the resources of civic groups and district offices to promote parenting education related to the caring of children under the age of 2. No earlier statistics are available since the program was not in force until 2012.

Attachment 5-2 (Paragraphs 141, 212, 233) Subsidies for Expenses for Early Intervention Treatment

Unit: person/time, NT\$

| Year | Beneficiaries | Subsidies |
|------|---------------|------------|
| 2011 | 25,398 | 90,090,000 |
| 2012 | 27,928 | 81,081,000 |
| 2013 | 36,229 | 79,081,000 |
| 2014 | 39,299 | 45,519,000 |
| 2015 | 44,765 | 51,510,000 |

Source: Ministry of Health and Welfare

Attachment 5-3 (Paragraphs 141, 233) Statistics on Child Care Services

Unit: person, number of centers

| Year | Family Child Care Services | | | Institutional Child Care Services | | Community-based Child Care Services |
|------|-------------------------------|--------------------------------|----------------------------------|-----------------------------------|---|--|
| | The Number of Persons Managed | | | Private Infant Centers | Public-Private Collaborative Infant Centers | Public-Private Collaborative Resource Centers for Child Care |
| | Total | Registered Child Care Provider | Relatives as Child Care Provider | | | |
| 2011 | 16,419 | 16,419 | - | 185 | - | - |
| 2012 | 23,167 | 18,505 | 4,662 | 389 | 13 | 26 |
| 2013 | 34,199 | 20,549 | 13,650 | 507 | 46 | 57 |
| 2014 | 41,849 | 21,381 | 20,468 | 587 | 72 | 81 |
| 2015 | 48,681 | 22,933 | 25,748 | 643 | 92 | 100 |

Source: Ministry of Health and Welfare

Note:

1. With the relaxation of child care provider qualifications in 2012, in compliance with the “Protection of Children and Youths Welfare and Rights Act,” many relatives of minor children have attended professional training courses and joined centers for family child care services, under the guidance and management of concerned authorities. Statistics have been compiled since 2012.
2. The “Program of Public-Private Collaborative Infant Centers and Public-Private Collaborative Resource Centers for Child Care” has been implemented since 2012.

Attachment 5-4 (Paragraphs 141, 233) Statistics on Community-based Care (After-School Care) for Children and Youth from Disadvantaged Families

Unit: case, NT\$, person/time

| Year | Community-based Care for Children and Youth from Disadvantaged Families | | | After-School Care and Services for Children from Single-Parent Families | | |
|------|---|------------|------------------------|---|------------|------------------------|
| | Cases | Subsidies | Services (person/time) | Cases | Subsidies | Services (person/time) |
| 2011 | 107 | 37,070,000 | 336,589 | 206 | 19,654,140 | 224,223 |
| 2012 | 107 | 36,656,000 | 343,604 | 173 | 19,091,420 | 181,252 |
| 2013 | 106 | 47,167,500 | 254,381 | 164 | 19,920,800 | 231,416 |
| 2014 | 126 | 34,655,575 | 740,627 | included in the preceding category | | |
| 2015 | 58 | 18,846,400 | 745,361 | Included in the preceding category | | |

Source: Ministry of Health and Welfare

Attachment 5-5 (Paragraphs 141, 233) Statistics on Living Assistance to Disadvantaged Children and Youth

Unit: person, NT\$

| Year | Beneficiaries | Subsidies |
|------|---------------|---------------|
| 2011 | 117,309 | 1,997,757,320 |
| 2012 | 128,310 | 2,880,343,461 |
| 2013 | 124,167 | 2,780,580,199 |
| 2014 | 122,236 | 2,814,336,672 |
| 2015 | 119,598 | 2,782,903,686 |

Source: Ministry of Health and Welfare

Attachment 5-6 (Paragraphs 141, 233) Statistics on Emergency Living Assistance to Disadvantaged Children and Youth

Unit: person/time, NT\$

| Year | Beneficiaries | Persons Covered by the High-Risk Family Assistance Program | Persons Covered by the Child and Youth Protection Individual Guidance Program | Number of Visits by Social Workers | Subsidies |
|------|---------------|--|---|------------------------------------|-------------|
| 2011 | 16,929 | 1,655 | 1,466 | 46,205 | 344,509,376 |
| 2012 | 16,064 | 1,233 | 984 | 40,125 | 256,013,007 |
| 2013 | 15,476 | 1,046 | 639 | 37,153 | 211,812,032 |
| 2014 | 12,452 | 1,524 | 805 | 32,941 | 169,494,645 |
| 2015 | 7,777 | 1,124 | 780 | 37,691 | 140,748,853 |

Source: Ministry of Health and Welfare

Attachment 5-7 (Paragraphs 141, 233) Statistics on Assistance for Families in Hardship

Unit: person, NT\$

| Year | Beneficiaries | Subsidies |
|------|---------------|-------------|
| 2011 | 20,834 | 481,594,793 |
| 2012 | 20,167 | 448,395,826 |
| 2013 | 19,169 | 403,033,607 |
| 2014 | 19,033 | 429,780,346 |
| 2015 | 19,297 | 420,124,648 |

Source: Ministry of Health and Welfare

Attachment 5-8 (Paragraphs 141, 233) Statistics on Medical Care Subsidies for Children and Youth

Unit: person/time, NT\$

| Year | National Health Insurance Co-payments for Children Aged 3 or Under | | National Health Insurance Premiums for Low-To-Middle Income Households | |
|------|--|---------------|--|---------------|
| | Beneficiaries | Subsidies | Beneficiaries | Subsidies |
| 2011 | 11,888,577 | 1,728,339,362 | 1,905,865 | 904,837,701 |
| 2012 | 11,838,157 | 1,771,491,000 | 2,690,804 | 1,296,369,948 |
| 2013 | 12,643,044 | 1,812,616,099 | 2,299,272 | 1,246,622,646 |
| 2014 | 12,849,730 | 1,892,926,761 | 2,335,347 | 1,276,914,187 |
| 2015 | 15,453,602 | 1,856,868,670 | 1,556,698 | 951,478,151 |

Source: Ministry of Health and Welfare

Note: Statistics regarding the National Health Insurance premiums of low-to-middle income households were generated automatically by the computing system of the National Health Insurance Administration. The amounts of overpayment recovery and offset balance are not included.

Attachment 5-9 (Paragraphs 141, 233) Allowances for Unemployed Parents with Children Under the Age of 2

Unit: person, NT\$

| Year | Beneficiaries | | | Subsidies |
|------|---------------|---------|---------|---------------|
| | Total | Male | Female | |
| 2012 | 212,582 | 110,543 | 102,039 | 4,172,249,926 |
| 2013 | 254,331 | 132,074 | 122,257 | 5,255,001,697 |
| 2014 | 258,436 | 133,903 | 124,533 | 5,110,139,314 |
| 2015 | 255,722 | 132,621 | 123,101 | 5,045,091,349 |

Source: Ministry of Health and Welfare

Note: The “Implementation Plan of Allowances for Unemployed Parents with Children Under the Age of 2” has been implemented since 2012.

Attachment 5-10 (Paragraphs 141, 233) Child Care Subsidy for Employed Parents with Qualified Child Care Providers

Unit: person, NT\$

| Year | Beneficiaries | | | Subsidies |
|------|---------------|--------|--------|---------------|
| | Total | Male | Female | |
| 2011 | 23,648 | 23,648 | | 473,379,100 |
| 2012 | 38,516 | 38,516 | | 725,601,500 |
| 2013 | 59,370 | 30,643 | 28,727 | 1,135,637,963 |
| 2014 | 62,744 | 32,376 | 30,368 | 1,251,947,003 |
| 2015 | 77,721 | 40,321 | 37,400 | 1,440,218,325 |

Source: Ministry of Health and Welfare

Note: Statistics by gender was available starting 2013.

Attachment 5-11 (Paragraphs 141, 233, 236) Subsidies for After-School Care Classes for Children

Unit: person/time, NT\$

| Year | Beneficiaries | Subsidies |
|------|---------------|-------------|
| 2011 | 54,514 | 181,027,783 |
| 2012 | 58,365 | 201,293,642 |
| 2013 | 64,710 | 208,552,949 |
| 2014 | 64,309 | 228,220,686 |
| 2015 | 67,540 | 226,914,025 |

Source: Ministry of Education

Note: Care classes are set up by public and private primary schools to provide after-school care and service to children.

Attachment 5-12 (Paragraphs 141, 233, 236) Statistics on After-School Care and Service Centers for Children

Unit: number of centers, person

| Year | Number of Centers | Enrollments |
|------|-------------------|-------------|
| 2013 | 789 | 33,000 |
| 2014 | 807 | 24,713 |
| 2015 | 793 | 24,713 |

Source: Ministry of Education

Note: After-School Care and Service Centers for children are set up by district offices, private persons or institutions, or civic groups. Since 2013, the Ministry of Education has taken over the supervision of these centers from the Child Welfare Bureau of the Ministry of the Interior (now Social and Family Affairs Administration under the Ministry of Health and Welfare).

Attachment 5-13 (Paragraphs 141, 233) Statistics on Free Education Plan for 5-Year-Old Preschoolers

Unit: person/time, NT\$

| Year | Beneficiaries | Subsidies |
|------|---------------|---------------|
| 2011 | 152,850 | 3,480,477,952 |
| 2012 | 197,024 | 6,896,148,704 |
| 2013 | 382,957 | 6,719,616,369 |
| 2014 | 377,655 | 6,494,907,194 |
| 2015 | 356,137 | 6,031,109,642 |

Source: Ministry of Education

Note:

1. The “Free Education Plan for 5-Year-Old Preschoolers” has been fully implemented since August 2011. Related statistics were compiled since August 2011.
2. In compliance with the integration of kindergartens and nursery schools, statistics on the operations and expenses of nursery schools run by the Ministry of the Interior have been included in the overall statistics since 2013.

Attachment 5-14 (Paragraphs 141, 233) Statistics on Implementation of “After-School Supporting Plan for Children of Indigenous Families” and Subsidies for Indigenous Children Attending Preschool

Unit: class, person, NT\$, person/time

| Year | “After-School Supporting Plan for Children of Indigenous Families” | | | Subsidies for Indigenous Children Attending Preschool | |
|------|--|---------------|------------|---|-------------|
| | Number of Classes | Beneficiaries | Subsidies | Beneficiaries | Subsidies |
| 2011 | - | - | - | 17,291 | 150,775,054 |
| 2012 | - | - | - | 18,404 | 164,672,375 |
| 2013 | - | - | - | 19,071 | 170,928,800 |
| 2014 | 22 | 606 | 10,080,000 | 18,017 | 162,017,650 |
| 2015 | 24 | 609 | 9,270,000 | 18,483 | 169,080,000 |

Source: Council of Indigenous Peoples

Note: The “After-School Supporting Plan for Children of Indigenous Families” has been implemented since 2014.

Attachment 5-15 (Paragraphs 141, 233) Statistics on Child Care Facilities or Measures of Business Entities With More Than 250 Employees

Unit: %

| Year | Total | Setting Up Child Care Facilities | Providing Child Care Measures |
|------|-------|----------------------------------|-------------------------------|
| 2011 | 77.3 | 4.2 | 73.1 |
| 2012 | 76.7 | 4.5 | 72.2 |
| 2013 | 79.1 | 4.1 | 75.0 |
| 2014 | 81.4 | 4.1 | 77.3 |
| 2015 | 81.5 | 4.0 | 77.4 |

Source: Ministry of Labor

Attachment 5-16 (Paragraphs 141, 233) Statistics on Parental Leave Allowance

Unit: person, %, NT\$

| Year | Approved Allowances | Number of First-Time Applicants Approved | Male | | Female | |
|-------|---------------------|--|---------|------------|---------|------------|
| | | | Persons | Percentage | Persons | Percentage |
| 2011 | 3,570,769,118 | 40,498 | 6,928 | 17.11 | 33,570 | 82.89 |
| 2012 | 4,937,641,697 | 56,165 | 8,947 | 15.93 | 47,218 | 84.07 |
| 2013 | 5,898,433,419 | 62,595 | 10,308 | 16.47 | 52,287 | 83.53 |
| 2014 | 6,388,104,178 | 68,301 | 11,013 | 16.12 | 57,288 | 83.88 |
| 2015 | 8,435,577,308 | 85,872 | 14,258 | 16.60 | 71,614 | 83.40 |
| Total | 29,230,525,720 | 313,431 | 51,454 | 16.42 | 261,977 | 83.58 |

Source: Ministry of Labor

Note:

1. The allowances were first provided on May 1, 2009.
2. The number of first-time applicants approved: People covered by employment insurance may apply for unpaid parental leave and a parental leave allowance. The Bureau of Labor Insurance will pay the allowance monthly for the duration of their parental leave. People who have received their first month's allowance are included in the number of first-time applicants approved.

Attachment 5-17 (Paragraphs 141, 233) Impact of Special Tax Deductions for Preschool Children

Unit: 10,000 households, NT\$100 million

| Year | Beneficiaries | Added Amount of Disposable Income |
|------|---------------|-----------------------------------|
| 2012 | 58.9 | 7.1 |
| 2013 | 59.2 | 6.7 |
| 2014 | 59.8 | 7.0 |
| 2015 | - | - |

Source: Fiscal Information Agency, Ministry of Finance

Note:

1. Year in regard is tax year.
2. Statistics for 2012 and 2013 are final. The 2014 figures are preliminary, and data for 2015 are not yet available.

Attachment 5-18 (Paragraph 152) Number of Visitor and Resident Visas Issued to Foreign Minors who Are the Children of ROC Nationals With Household Registration in Taiwan

Unit: case

| Year | TC Visa Issued |
|------|----------------|
| 2011 | 458 |
| 2012 | 365 |
| 2013 | 450 |
| 2014 | 460 |
| 2015 | 404 |

Source: Ministry of Foreign Affairs

Attachment 5-19 (Paragraph 161) Statistics on Children and Youth Placed in Placement Institutions

Unit: institution, bed, person

| Year | Number of Institutions | Number of Beds approved | Number of Placements | | |
|------|------------------------|-------------------------|----------------------|-------|--------|
| | | | Total | Male | Female |
| 2011 | 120 | 4,577 | 3,609 | 1,837 | 1,772 |
| 2012 | 123 | 4,816 | 3,549 | 1,858 | 1,691 |
| 2013 | 126 | 4,985 | 3,542 | 1,842 | 1,700 |
| 2014 | 124 | 4,991 | 3,501 | 1,818 | 1,683 |
| 2015 | 122 | 5,004 | 3,471 | 1,767 | 1,704 |

Source: Ministry of Health and Welfare

Note: In recent years, some placement institutions, mostly small with limited number of beds and not able to balance the operational cost, were closed. On the other hand, some placement institutions have expanded and newly approved institutions in general have larger capacities. Thus, the number of institutions has decreased, but the number of beds has increased.

Attachment 5-20 (Paragraph 161) Statistics on Foster Families and Foster Children

Unit: household, person

| Year | Households | Number of Children and Youth | | |
|------|------------|------------------------------|------|--------|
| | | Total | Male | Female |
| 2011 | 1,243 | 1,802 | 937 | 865 |
| 2012 | 1,248 | 1,835 | 927 | 908 |
| 2013 | 1,275 | 1,804 | 899 | 905 |
| 2014 | 1,289 | 1,743 | 847 | 896 |
| 2015 | 1,326 | 1,662 | 804 | 858 |

Source: Ministry of Health and Welfare

**Attachment 5-21 (Paragraph 161) Statistics on Children and Youth in Long-term Placement
(Over Two Years)**

Unit: person

| Year | Age | Total | Number of Persons in Placement | | | | | Number of Persons in Foster Care | | |
|------|-------|-------|--------------------------------|--------------------------------|--------|--------------------|--------|----------------------------------|------|--------|
| | | | Subtotal | Government-initiated Placement | | Direct Application | | Subtotal | Male | Female |
| | | | | Male | Female | Male | Female | | | |
| 2011 | 0-6 | 294 | 88 | 42 | 19 | 7 | 20 | 206 | 121 | 85 |
| | 6-12 | 710 | 492 | 213 | 183 | 48 | 48 | 218 | 119 | 99 |
| | 12-18 | 1,059 | 942 | 425 | 324 | 101 | 92 | 117 | 51 | 66 |
| | Total | 2,063 | 1,522 | 680 | 526 | 156 | 160 | 541 | 291 | 250 |
| 2012 | 0-6 | 284 | 70 | 30 | 14 | 12 | 14 | 214 | 111 | 103 |
| | 6-12 | 748 | 519 | 239 | 196 | 38 | 46 | 229 | 129 | 100 |
| | 12-18 | 1,125 | 997 | 448 | 368 | 89 | 92 | 128 | 55 | 73 |
| | Total | 2,157 | 1,586 | 717 | 578 | 139 | 152 | 571 | 295 | 276 |
| 2013 | 0-6 | 306 | 66 | 26 | 16 | 8 | 16 | 240 | 105 | 135 |
| | 6-12 | 759 | 491 | 235 | 185 | 38 | 33 | 268 | 144 | 124 |
| | 12-18 | 1,167 | 1,043 | 476 | 387 | 91 | 89 | 124 | 48 | 76 |
| | Total | 2,232 | 1,600 | 737 | 588 | 137 | 138 | 632 | 297 | 335 |
| 2014 | 0-6 | 351 | 85 | 40 | 29 | 8 | 8 | 266 | 127 | 139 |
| | 6-12 | 781 | 461 | 221 | 175 | 30 | 35 | 320 | 176 | 144 |
| | 12-18 | 1,275 | 1,150 | 542 | 425 | 103 | 80 | 125 | 49 | 76 |
| | Total | 2,407 | 1,696 | 803 | 629 | 141 | 123 | 711 | 352 | 359 |
| 2015 | 0-6 | 344 | 74 | 39 | 25 | 5 | 5 | 270 | 118 | 152 |
| | 6-12 | 739 | 436 | 215 | 158 | 32 | 31 | 303 | 158 | 145 |
| | 12-18 | 1,199 | 1,090 | 511 | 438 | 65 | 76 | 109 | 43 | 66 |
| | Total | 2,282 | 1,600 | 765 | 621 | 102 | 112 | 682 | 319 | 363 |

Source: Ministry of Health and Welfare

Note:

1. Government-initiated Placement: A placement arranged by a local government, including cases of child protection in compliance with Article 56 of the “Protection of Children and Youths Welfare and Rights Act” and cases arranged by parents as regulated by Article 62 of the “Protection of Children and Youths Welfare and Rights Act.”
2. Direct Application: In cases where parents apply directly for placement with the institutions, rather than through local government agencies, the local authority where the children and youth are registered is still responsible for providing assistance so that the individual can receive the necessary treatment and services.

Attachment 5-22 (Paragraph 161) Statistics on Abandoned Babies, Children and Youth

Unit: person

| Year | Total | Number of Abandoned Babies | | | Number of Abandoned Children and Youth | | |
|------|-------|----------------------------|------|--------|--|------|--------|
| | | Subtotal | Male | Female | Subtotal | Male | Female |
| 2011 | 282 | 13 | 7 | 6 | 269 | 126 | 143 |
| 2012 | 217 | 18 | 12 | 6 | 199 | 112 | 87 |
| 2013 | 189 | 12 | 5 | 7 | 177 | 87 | 90 |
| 2014 | 106 | 7 | 3 | 4 | 99 | 56 | 43 |
| 2015 | 90 | 8 | 3 | 5 | 82 | 43 | 39 |

Source: Ministry of Health and Welfare

Attachment 5-23 (Paragraph 161) Independent-Living Program for Youth Leaving Foster Care

Unit: person

| Year | Number of Youth Receiving Rent | Number of Youth Receiving Rental Deposit | Number of Youth Receiving Living Expense | Number of Youth Receiving Transportation Subsidies | Number of Youth Receiving School Fees | Number of Cases of Subsidized Vocational Training | Number of Youth Receiving Miscellaneous Fees | Number of Youth Receiving Processing Fees Regarding Social and Psychological Assessments | Group Activities and Guidance and Educational Training | Case Visits |
|-------|--------------------------------|--|--|--|---------------------------------------|---|--|--|--|-------------|
| 2014 | 108 | 28 | 224 | 89 | 89 | 5 | 35 | 14 | 359 | 558 |
| 2015 | 158 | 37 | 266 | 103 | 115 | 3 | 54 | 11 | 339 | 645 |
| Total | 266 | 65 | 490 | 192 | 204 | 8 | 89 | 25 | 698 | 1,203 |

Source: Ministry of Health and Welfare

Note: Statistics on the programs are breakdown of various service programs since 2014.

Attachment 5-24 (Paragraph 171) Statistics on Reasons for Children Being Adopted (Multiple Choices)

Unit: person/time

| Year | Total | Child Born Out of Wedlock | Child Born of External Marital Affairs | Abandoned Child | Abused Child | Single Parent With Difficulties | Financial Difficulties | Unexpected Pregnancy of Families with Many Children | Child Not Accepted By Family Members | Main Caring Person In Bad Health | Family Not Able to Provide Care or Education | Others |
|------|-------|---------------------------|--|-----------------|--------------|---------------------------------|------------------------|---|--------------------------------------|----------------------------------|--|--------|
| 2012 | 976 | 58 | 28 | 137 | 28 | 155 | 217 | 42 | 79 | 32 | 194 | 6 |
| 2013 | 1,178 | 12 | 17 | 183 | 33 | 205 | 212 | 71 | 102 | 54 | 228 | 61 |
| 2014 | 1,232 | 166 | 42 | 58 | 18 | 166 | 265 | 62 | 124 | 31 | 264 | 36 |
| 2015 | 1,109 | 187 | 8 | 13 | 25 | 202 | 222 | 47 | 109 | 21 | 244 | 31 |

Source: Ministry of Health and Welfare

Note:

1. Statistics have been compiled since June 2012. (New regulations regarding Child Adoption Services have been in force since May 30, 2012.)
2. Source of information are provided by child adoption services providers set up in compliance with regulations specified in Article 16, Paragraph 1, of the “Protection of Children and Youths Welfare and Rights Act.”

Attachment 5-25 (Paragraph 171) Statistics on Children and Youth of Domestic and Inter-Country Adoption

Unit: person, %

| Year | Total | Domestic Adoption | | Inter-Country Adoption | |
|-------|-------|-------------------|-------|------------------------|-------|
| | | Number | Rate | Number | Rate |
| 2012 | 273 | 80 | 29.30 | 193 | 70.70 |
| 2013 | 266 | 100 | 37.59 | 166 | 62.41 |
| 2014 | 347 | 155 | 44.67 | 192 | 55.33 |
| 2015 | 301 | 143 | 47.51 | 158 | 52.49 |
| Total | 1,187 | 478 | 40.27 | 709 | 59.73 |

Source: Ministry of Health and Welfare

Note:

1. Statistics have been compiled since June 2012. (New regulations regarding Child Adoption Services have been in force since May 30, 2012.)
2. Source of information are provided by child adoption services providers set up in compliance with regulations specified in Article 16, Paragraph 1, of the “Protection of Children and Youths Welfare and Rights Act.”

Attachment 5-26 (Paragraph 171) Number of Adoptions Approved or Terminated by the Court

Unit: person

| Year | Approved Adoption | Terminated Adoption |
|------|-------------------|---------------------|
| 2011 | 2,294 | 60 |
| 2012 | 2,005 | 81 |
| 2013 | 1,651 | 101 |
| 2014 | 1,611 | 101 |
| 2015 | 1,584 | 86 |

Source: Judicial Yuan

Attachment 5-27 (Paragraph 171) Inter-country Adoption Cases by Country

Unit: person, %

| Year | Total | U.S.A. | Australia | Netherlands | Canada | Germany | Sweden | Denmark | Others |
|-------|-------|--------|-----------|-------------|--------|---------|--------|---------|--------|
| 2012 | 193 | 79 | 26 | 17 | 8 | 5 | 35 | 4 | 19 |
| 2013 | 166 | 82 | 21 | 15 | 3 | 4 | 35 | 3 | 3 |
| 2014 | 192 | 73 | 33 | 16 | 11 | 4 | 48 | 3 | 4 |
| 2015 | 158 | 53 | 22 | 16 | 8 | 6 | 46 | 2 | 5 |
| Total | 709 | 287 | 102 | 64 | 30 | 19 | 164 | 12 | 31 |
| Rate | 100 | 40.4 | 14.4 | 9.03 | 4.24 | 2.7 | 23.13 | 1.7 | 4.4 |

Source: Ministry of Health and Welfare

Note:

1. Statistics have been compiled since June 2012 (New regulations regarding Child Adoption Services have been in force since May 30, 2012.)
2. Source of information are provided by child adoption services providers set up in compliance with regulations specified in Article 16, Paragraph 1, of the “Protection of Children and Youths Welfare and Rights Act.”

Attachment 5-28 (Paragraph 172) Number of Cases and People Prosecuted by District Prosecutors’ Office, in compliance with Articles 241 and 242 of the “Criminal Code”

Unit: case, person

| Year | Article 241 of the “Criminal Code” | | Article 242 of the “Criminal Code” | |
|------|------------------------------------|---------|------------------------------------|---------|
| | Cases | Persons | Cases | Persons |
| 2011 | 20 | 23 | 4 | 5 |
| 2012 | 18 | 19 | 2 | 2 |
| 2013 | 18 | 20 | 5 | 7 |
| 2014 | 37 | 44 | - | - |
| 2015 | 23 | 24 | 4 | 4 |

Source: Ministry of Justice

Attachment 5-29 (Paragraph 172) Number of Convictions by the District Prosecutors' Offices, in compliance with Articles 241 and 242 of the "Criminal Code"

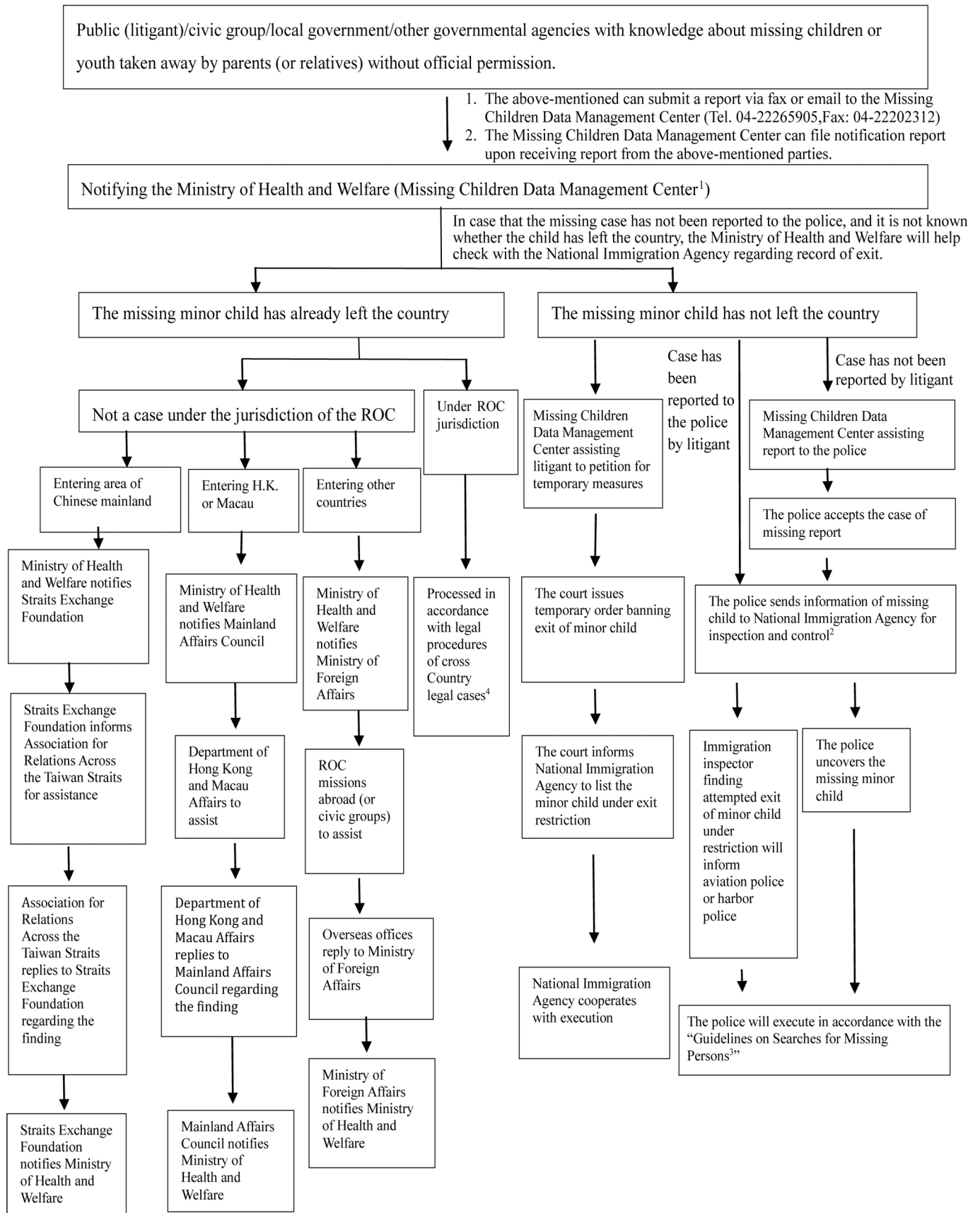
Unit: person

| Year | Article 241 of the "Criminal Code" | | | | | | | Article 242 of the "Criminal Code" | | | | | | | |
|------|------------------------------------|----------|-------------------------|--------------------------------|---|--|-----------|------------------------------------|------------------------|----------|-------------------------|--------------------------------|---|-----------|--|
| | Total | Sentence | | | | | Exemption | Total | Sentence | | | | | Exemption | |
| | | Subtotal | 6 or Less Than 6 Months | Over 6 Months Less Than 1 Year | 1 or More Than 1 Year Less Than 2 Years | 2 or More Than 2 Years Less Than 3 Years | | | 3 or More Than 3 Years | Subtotal | 6 or Less Than 6 Months | Over 6 Months Less Than 1 Year | 1 or More Than 1 Year Less Than 2 Years | | 2 or More Than 2 Years Less Than 3 Years |
| 2011 | 5 | 5 | 1 | - | 3 | - | 1 | - | - | - | - | - | - | - | - |
| 2012 | 11 | 11 | 1 | 2 | 8 | - | - | 2 | - | - | 2 | - | - | - | - |
| 2013 | 7 | 7 | 1 | - | 3 | 2 | 1 | 1 | - | - | 1 | - | - | - | - |
| 2014 | 15 | 15 | 5 | 3 | 7 | - | - | - | - | - | - | - | - | - | - |
| 2015 | 9 | 9 | 3 | 2 | 4 | - | - | - | - | - | - | - | - | - | - |

Source: Ministry of Justice

Attachment 5-30 (Paragraph 173) Procedures to Help Search for Missing Children or Youth Taken Away by Parents (or Relatives) without Official Permission

Source: Ministry of Health and Welfare



1. Services of the Missing Children Data Management Center include notification and management of missing cases, tracking investigation progress and assistance in search, psychological counseling, advice, resources recommendation.
2. In a missing person case, if the missing person is a minor child taken away by a parent or parents (or relatives) without authorization, the police upon accepting the case shall inform the National Immigration Agency to restrict the child's exit from the country.
3. Personnel of aviation or harbor police units, being informed by the National Immigration Agency regarding exit ban of a missing child, should have full respect of personal freedom of the party involved, and handle the situation without effecting regular landings and departures of flights.
4.
 - (1) If a missing child has entered a country (or area) which has signed a mutual legal assistance agreement with the ROC, the Ministry of Justice will request assistance in investigation and collecting evidence.
 - (2) If a missing child has entered a country which does not have a mutual legal assistance agreement with the ROC, the court, prosecutor offices, or the Ministry of Justice will request the Ministry of Foreign Affairs to instruct ROC representative office in that country to contact justice authorities of that country to provide assistance based on reciprocal principle.
 - (3) If a missing child has entered Hong Kong or Macau, the Mainland Affairs Council will request the Department of Hong Kong and Macau Affairs to contact related authorities in Hong Kong and Macau for assistance.

Attachment 5-31 (Paragraph 173) Statistics on Missing Children and Youth of Different Age Groups Taken Away by Parents (or Relatives) without Official Permission

Unit: person

| Year | Total | 0 to 3 Years of Age | 3 to 6 Years of Age | 6 to 12 Years of Age | 12 to 18 Years of Age |
|-------|-------|---------------------|---------------------|----------------------|-----------------------|
| 2014 | 268 | 75 | 89 | 87 | 17 |
| 2015 | 220 | 114 | 34 | 48 | 24 |
| Total | 488 | 189 | 123 | 135 | 41 |

Source: Ministry of Health and Welfare

Note: Statistics have been compiled since January 2014. (The project has been implemented since Jan. 29, 2014.)

Attachment 5-32 (Paragraph 173) Outcomes of Investigations and Searches for Missing Children and Youth Taken Away by Parents (or Relatives) without Official Permission

Unit: case, household, person

| Year | Notification Cases | Households | Number of Children and Youth Taken Away without Official Permission | Number of Missing Children and Youth Recovered |
|-------|--------------------|------------|---|--|
| 2014 | 275 | 224 | 268 | 143 |
| 2015 | 245 | 180 | 220 | 184 |
| Total | 520 | 404 | 488 | 327 |

Source: Ministry of Health and Welfare

Note: Statistics have been compiled since January 2014. (The project has been implemented since Jan. 29, 2014.)

Attachment 5-33 (Paragraph 174) Reported Cases of Missing Children and Youth Taken Away by Parents or Relatives without Official Permission

Unit: case, %

| Year | Under the Age of 7 | | | | | | Aged 7 or Over but Under 12 | | | | | | Aged 12 or Over but Under 18 | | | | | | | | |
|-------|--------------------|------|--------|----------------------------|------|--------|-----------------------------|----------------|------|--------|----------------------------|------|------------------------------|---------------|----------------|------|--------|----------------------------|------|--------|---------------|
| | Accepted Cases | | | Number of People Recovered | | | Recovery Rate | Accepted Cases | | | Number of People Recovered | | | Recovery Rate | Accepted Cases | | | Number of People Recovered | | | Recovery Rate |
| | Total | Male | Female | Total | Male | Female | | Total | Male | Female | Total | Male | Female | | Total | Male | Female | Total | Male | Female | |
| 2011 | 396 | 196 | 200 | 391 | 192 | 199 | 98.74 | 206 | 110 | 96 | 206 | 110 | 96 | 100.00 | 100 | 42 | 58 | 100 | 42 | 58 | 100.00 |
| 2012 | 329 | 174 | 155 | 324 | 172 | 152 | 98.48 | 142 | 80 | 62 | 141 | 79 | 62 | 99.30 | 123 | 53 | 70 | 120 | 53 | 67 | 97.56 |
| 2013 | 315 | 183 | 132 | 312 | 182 | 130 | 99.05 | 167 | 82 | 85 | 165 | 81 | 84 | 98.80 | 110 | 41 | 69 | 110 | 41 | 69 | 100.00 |
| 2014 | 282 | 149 | 133 | 269 | 147 | 122 | 95.39 | 137 | 79 | 58 | 133 | 77 | 56 | 97.08 | 112 | 59 | 53 | 108 | 57 | 51 | 96.43 |
| 2015 | 304 | 151 | 153 | 269 | 130 | 139 | 88.49 | 101 | 42 | 59 | 93 | 38 | 55 | 92.08 | 110 | 52 | 58 | 105 | 52 | 53 | 95.45 |
| Total | 1,626 | 853 | 773 | 1,565 | 823 | 742 | 96.25 | 753 | 393 | 360 | 738 | 385 | 353 | 98.01 | 555 | 247 | 308 | 543 | 245 | 298 | 97.84 |

Source: Ministry of the Interior

Attachment 5-34 (Paragraph 177) Statistics on People Obligated to Report Abuse or Neglect of Children or Youth and the Number and Types of Cases Reported

Unit: case, person, %

| Year | Sources of Notification (cases) | | | | | | | | | | | | | Types of Notifications | | | | | | | | | |
|------|--|-------------------|----------------|-----------------------|----------------------|--------------------|--------|--------------------|-----------------------|-----------------------------------|-----------------------------|------------------------------------|----------|---------------------------------|-----------|----------------------------|---------------------------------|--------|----------------|--------------------|---|------------------|---------------------|
| | Number of Notifications by Personnel Obligated to Issue Them | | | | | | | | | | | | | Number of General Notifications | | | | | | | | | |
| | Subtotal | Medical personnel | Social Workers | Educational Personnel | Child Care Personnel | Preschool Educator | Police | Judicial Personnel | Immigration Personnel | House Hold Registration Personnel | District Office Secretaries | Other Personnel of Related Affairs | Subtotal | Father or mother | Relatives | Litigant Applying for Help | Neighbor or People Of Community | Others | Domestic Abuse | External Incidents | Campus Bullying, Sex Harassment, Drug Abuse | Repeated Reports | Information Unclear |
| 2011 | 28,955 | 21,115 | 3,918 | 5,408 | 6,971 | 134 | - | 3,898 | 211 | - | - | 575 | 7,840 | 3,004 | 1,316 | 1,087 | 2,008 | 425 | - | - | - | - | - |
| 2012 | 35,823 | 29,996 | 4,967 | 7,487 | 8,954 | 155 | - | 5,978 | 263 | - | 61 | 2,131 | 5,827 | 2,302 | 1,118 | 860 | 1,293 | 254 | - | - | - | - | - |
| 2013 | 34,545 | 30,753 | 4,480 | 7,489 | 7,856 | 90 | - | 6,895 | 254 | - | 46 | 3,643 | 3,792 | 1,687 | 597 | 512 | 866 | 130 | - | - | - | - | - |
| 2014 | 49,881 | 40,220 | 3,398 | 10,121 | 15,411 | 208 | - | 10,505 | 427 | - | 39 | 111 | 9,661 | 2,504 | 1,275 | 2,480 | 2,162 | 1,240 | 21,042 | 6,953 | 5,822 | 10,580 | 5,484 |
| 2015 | 53,860 | 44,383 | 2,708 | 11,131 | 17,636 | 208 | - | 11,853 | 720 | - | 57 | 70 | 9,477 | 2,198 | 1,180 | 2,660 | 2,025 | 1,414 | 22,048 | 7,276 | 6,999 | 11,477 | 6,060 |

Source: Ministry of Health and Welfare

Note:

1. The revised version of the “Protection of Children and Youths Welfare and Rights Act” promulgated on Feb. 4, 2015 added provisions obligating preschool educators, immigration processing personnel and household registration personnel to report related cases.
2. Article 53 of the “Protection of Children and Youths Welfare and Rights Act” stipulates, personnel obligated to report on cases of children and youth protection are also obligated to report on child abuse and children or youth using drugs. The same incident may be reported by several types of people.
3. In view of the wide-ranging grounds for reporting cases of children or youth protection in the “Protection of Children and Youths Welfare and Rights Act” and some overlaps of regulations, to help social workers focus on domestic abuse incidents, the Ministry of Health and Welfare has adopted a system to triage children and youth protection cases into several categories, including domestic abuse, external incidents, school bullying, sex harassment, and drug abuse. The categorized statistics have been available since 2014.

Attachment 5-35 (Paragraph 178) Number of Abused Children or Youth, Types of Abuse, Deaths from Serious Abuse

Unit: person

| Year | Total | | 0 to 3 Years of Age | | 3 to 6 Years of Age | | 6 to 9 Years of Age | | 9 to 12 Years of Age | | 12 to 15 Years of Age | | 15 to 18 Years of Age | | |
|------|--------|-------|---------------------|------|---------------------|-------|---------------------|-------|----------------------|-------|-----------------------|-------|-----------------------|-------|--------|
| | Total | Male | Female | Male | Female | Male | Female | Male | Female | Male | Female | Male | Female | Male | Female |
| 2011 | 17,667 | 8,277 | 9,390 | 878 | 791 | 1,162 | 990 | 1,592 | 1,339 | 1,861 | 1,610 | 1,698 | 2,560 | 1,086 | 2,100 |
| 2012 | 19,174 | 9,102 | 10,072 | 924 | 796 | 1,272 | 1,011 | 1,693 | 1,403 | 2,038 | 1,639 | 1,894 | 2,921 | 1,281 | 2,302 |
| 2013 | 16,322 | 7,616 | 8,706 | 864 | 735 | 1,024 | 875 | 1,414 | 1,168 | 1,677 | 1,454 | 1,578 | 2,455 | 1,059 | 2,019 |
| 2014 | 11,589 | 5,304 | 6,285 | 724 | 608 | 684 | 610 | 1,053 | 903 | 1,079 | 864 | 1,102 | 1,765 | 662 | 1,535 |
| 2015 | 9,604 | 4,649 | 4,955 | 733 | 608 | 677 | 574 | 827 | 673 | 913 | 752 | 955 | 1,257 | 544 | 1,091 |

Types of Abuse

56

Unit: person/time

| Year | Total | | Abandonment | | Physical or Mental Abuse | | | | | | Others | | | | |
|------|--------|--------|-------------|------|--------------------------|----------------|--------|--------------|--------|--------------|--------|---------|--------|-------|-------|
| | Total | Male | Female | Male | Female | Physical Abuse | | Mental Abuse | | Sexual Abuse | | Neglect | | | |
| | | | | | | Male | Female | Male | Female | Male | Female | Male | Female | | |
| 2011 | 20,253 | 9,585 | 10,668 | 126 | 143 | 4,329 | 3,853 | 1,058 | 1,179 | 346 | 2,002 | 1,437 | 1,291 | 2,289 | 2,200 |
| 2012 | 21,488 | 10,168 | 11,320 | 112 | 87 | 4,342 | 3,723 | 1,156 | 1,254 | 367 | 2,348 | 1,401 | 1,200 | 2,790 | 2,708 |
| 2013 | 17,649 | 8,229 | 9,420 | 87 | 90 | 3,308 | 2,924 | 849 | 970 | 400 | 2,096 | 979 | 831 | 2,606 | 2,509 |
| 2014 | 12,519 | 5,763 | 6,756 | 56 | 43 | 2,167 | 1,779 | 665 | 685 | 303 | 1,661 | 651 | 598 | 1,921 | 1,990 |
| 2015 | 10,165 | 4,948 | 5,217 | 43 | 39 | 1,845 | 1,571 | 546 | 562 | 254 | 1,168 | 683 | 569 | 1,577 | 1,308 |

Deaths from Serious Abuse (including children murdered when parents commit suicide)

Unit: person

| Year | Total | Deaths from Serious Abuse | Children Murdered by Parents Committing Suicide |
|------|-------|---------------------------|---|
| 2011 | 21 | 12 | 9 |
| 2012 | 33 | 17 | 16 |
| 2013 | 20 | 11 | 9 |
| 2014 | 18 | 12 | 6 |
| 2015 | 30 | 18 | 12 |

Source: Ministry of Health and Welfare

Attachment 5-36 (Paragraphs 161, 178) Statistics on Children and Youth Put In Protective Placement

Unit: person/time

| Year | Total | | | Affected Child or Youth Remaining at Home | | Emergency Placement | | | | | | Continuous Placement | | | | | | Others | |
|------|--------|-------|--------|---|--------|-------------------------------|--------|------------------------------|--------|------------------------|--------|-------------------------------|--------|------------------------------|--------|------------------------|--------|--------|--------|
| | Total | Male | Female | Male | Female | Staying with Kinship Families | | Staying with Foster Families | | Placed in Institutions | | Staying with Kinship Families | | Staying with Foster Families | | Placed in Institutions | | Male | Female |
| | | | | | | Male | Female | Male | Female | Male | Female | Male | Female | Male | Female | Male | Female | | |
| 2011 | 17,613 | 8,246 | 9,367 | 6,412 | 7,191 | 37 | 73 | 175 | 160 | 206 | 302 | 118 | 176 | 338 | 357 | 592 | 687 | 368 | 421 |
| 2012 | 19,174 | 9,102 | 10,072 | 7,446 | 8,307 | 44 | 40 | 203 | 277 | 179 | 246 | 53 | 74 | 299 | 284 | 312 | 393 | 566 | 451 |
| 2013 | 16,322 | 7,616 | 8,706 | 6,071 | 6,737 | 15 | 30 | 109 | 135 | 104 | 186 | 26 | 49 | 183 | 204 | 308 | 376 | 800 | 989 |
| 2014 | 12,233 | 5,639 | 6,594 | 4,614 | 5,302 | 10 | 13 | 189 | 167 | 78 | 138 | 24 | 44 | 201 | 343 | 264 | 351 | 259 | 236 |
| 2015 | 11,155 | 5,542 | 5,613 | 4,596 | 4,436 | 12 | 12 | 64 | 90 | 85 | 116 | 65 | 87 | 205 | 253 | 404 | 494 | 111 | 125 |

Source: Ministry of Health and Welfare

Attachment 5-37 (Paragraph 178) Statistics on Protective Placements Ordered by District (Juvenile and Family) Courts

Unit: case, person

“Protection of Children and Youths Welfare and Rights Act”

| Year | Total | | | Continuous Placement | | | Extended Placement | | | Placement Terminated or Revoked | | | | |
|-------|--------|-------|--------|----------------------|-------|--------|--------------------|--------|-------|---------------------------------|-------|-------|------|--------|
| | Cases | Male | Female | Cases | Male | Female | Cases | Total | Male | Female | Cases | Total | Male | Female |
| 2011 | 2,390 | 1,318 | 1,717 | 825 | 425 | 621 | 1,519 | 1,929 | 875 | 1,054 | 46 | 60 | 18 | 42 |
| 2012 | 2,524 | 1,415 | 1,986 | 800 | 434 | 610 | 1,687 | 2,314 | 960 | 1,354 | 37 | 43 | 21 | 22 |
| 2013 | 2,927 | 1,488 | 2,375 | 786 | 394 | 627 | 2,098 | 2,790 | 1,072 | 1,718 | 43 | 52 | 22 | 30 |
| 2014 | 3,174 | 1,608 | 2,438 | 711 | 389 | 540 | 2,425 | 3,115 | 1,217 | 1,898 | 38 | 2 | 2 | 0 |
| 2015 | 3,078 | 1,557 | 2,300 | 667 | 330 | 466 | 2,384 | 3,056 | 1,227 | 1,829 | 27 | 5 | 0 | 5 |
| Total | 14,093 | 7,386 | 10,816 | 3,789 | 1,972 | 2,864 | 10,113 | 13,204 | 5,351 | 7,853 | 191 | 162 | 63 | 99 |

Source: Judicial Yuan

Attachment 5-38 (Paragraph 183) Statistics on Services for Children and Youth from High-Risk Families

Unit: group, person, %

| Year | Groups | Number of Social Workers | Number of Intake Families | Number of Open Case Families | Children and Youth included in Guidance Programs | Rate of Cases Being Processed |
|------|--------|--------------------------|---------------------------|------------------------------|--|-------------------------------|
| 2011 | 70 | 172 | 33,956 | 18,677 | 42,552 | 55 |
| 2012 | 83 | 220 | 36,196 | 27,193 | 44,772 | 75 |
| 2013 | 81 | 226 | 31,513 | 24,226 | 40,378 | 77 |
| 2014 | 83 | 224 | 49,033 | 24,334 | 34,764 | 50 |
| 2015 | 85 | 232 | 36,751 | 22,050 | 32,193 | 60 |

Source: Ministry of Health and Welfare

Note: Ratio of Cases Being Processed= Number of Open Case Families/ Number of Intake Families X 100%

Attachment 5-39 (Paragraph 184) Initiatives Taken by Authorities to Care for Disadvantaged Children Aged 6 or Under

Unit: person

| Year | Number of Children Being Cared for | Suspected Cases of Children Needing Protection, Authorities Concerned Taking Initiatives to Investigate | Follow-up Assessment of High-Risk Families | Cases which Require Social Workers to Understand Actual Living Condition | Cases Referred to Other Resources | No Need for Follow-up by Social Workers | Others |
|------|------------------------------------|---|--|--|-----------------------------------|---|--------|
| 2011 | 17,523 | 76 | 1,269 | 1,814 | 967 | 11,518 | 1,879 |
| 2012 | 14,478 | 60 | 1,442 | 816 | 619 | 10,547 | 994 |
| 2013 | 17,929 | 85 | 801 | 393 | 451 | 15,381 | 818 |
| 2014 | 22,446 | 92 | 587 | 663 | 612 | 19,134 | 1,358 |
| 2015 | 13,917 | 58 | 323 | Cancelled since 2015 | 597 | 11,219 | 1,720 |

Source: Ministry of Health and Welfare

CHAPTER 6 BASIC HEALTH AND WELFARE

Attachment 6-1 (Paragraph 193) Statistics on Unnatural Deaths of Children and Youth

| Year | Total | Deaths from Accidents | | | | | | | | | | Deaths from Suicide | Deaths from Homicide | Others |
|------|-------|-----------------------|-----------------------|-----------|---------|-----------------|----------|--------------------------------|----------------------------|--|----|---------------------|----------------------|--------|
| | | Traffic Accidents | | Poisoning | Falling | Burning by Fire | Drowning | Accidents Related to Breathing | Exposure to Natural Forces | Other Unspecified Accidents Not Related to Traffic Accidents and Their Sequela | | | | |
| | | Traffic Accidents | Auto-mobile Accidents | | | | | | | | | | | |
| 2011 | 344 | 287 | 158 | 148 | 6 | 27 | 7 | 41 | 33 | 1 | 14 | 24 | 15 | 18 |
| 2012 | 376 | 290 | 146 | 139 | 1 | 17 | 13 | 59 | 44 | - | 10 | 30 | 29 | 27 |
| 2013 | 328 | 269 | 145 | 139 | 4 | 15 | 12 | 41 | 39 | - | 13 | 20 | 17 | 22 |
| 2014 | 328 | 275 | 136 | 123 | 6 | 14 | 13 | 36 | 52 | - | 18 | 14 | 16 | 23 |
| 2015 | 272 | 205 | 94 | 83 | 6 | 14 | 11 | 22 | 42 | 1 | 15 | 23 | 31 | 13 |

Unit: person

Source: Ministry of Health and Welfare

Attachment 6-2 (Paragraph 195) Statistics on Children and Youth with Disabilities and Breakdown of Disabilities by Category

Unit: person, %

| Category | Total | | Visual Disabilities | | Hearing Disabilities | | Balance Disabilities | | Speech or Language Disabilities | | Physical Disabilities | | Intellectual Disabilities | | Organ Dysfunction | | Face Injury | |
|----------|-----------------------------|-------|---------------------|-------|----------------------|-------|----------------------|-------|---------------------------------|-------|-----------------------|-------|-------------------------------------|-------|--------------------|-------|---|-------|
| | Number | Ratio | Number | Ratio | Number | Ratio | Number | Ratio | Number | Ratio | Number | Ratio | Number | Ratio | Number | Ratio | Number | Ratio |
| Year | | | | | | | | | | | | | | | | | | |
| 2011 | 61,833 | | 1,377 | 2.23 | 3,427 | 5.54 | 38 | 0.06 | 1,677 | 2.71 | 6,038 | 9.77 | 23,228 | 37.57 | 3,098 | 5.01 | 269 | 0.44 |
| 2012 | 62,051 | | 1,338 | 2.16 | 3,329 | 5.36 | 37 | 0.06 | 1,449 | 2.34 | 5,957 | 9.60 | 22,804 | 36.75 | 2,940 | 4.74 | 179 | 0.29 |
| 2013 | 59,570 | | 1,243 | 2.09 | 3,194 | 5.36 | 29 | 0.05 | 1,327 | 2.23 | 5,726 | 9.61 | 20,970 | 35.20 | 2,815 | 4.73 | 149 | 0.25 |
| 2014 | 58,737 | | 1,140 | 1.94 | 3,158 | 5.38 | 34 | 0.06 | 1,300 | 2.21 | 5,550 | 9.45 | 20,182 | 34.36 | 2,739 | 4.66 | 139 | 0.24 |
| 2015 | 56,885 | | 1,054 | 1.85 | 3,107 | 5.46 | 31 | 0.05 | 1,393 | 2.45 | 5,264 | 9.25 | 18,871 | 33.17 | 2,620 | 4.61 | 140 | 0.25 |
| Category | Persistent Vegetative State | | Dementia | | Autism | | Chronic Psychosis | | Multiple Disabilities | | Refractory Epilepsy | | Disabilities Caused by Rare Disease | | Other Disabilities | | Under the New System, Disabilities that Cannot be Categorized by the Old System | |
| Year | Number | Ratio | Number | Ratio | Number | Ratio | Number | Ratio | Number | Ratio | Number | Ratio | Number | Ratio | Number | Ratio | Number | Ratio |
| 2011 | 63 | 0.10 | 7 | 0.01 | 8,707 | 14.08 | 283 | 0.46 | 10,202 | 16.50 | 419 | 0.68 | 803 | 1.30 | 2,197 | 3.55 | - | - |
| 2012 | 59 | 0.10 | 15 | 0.02 | 9,635 | 15.53 | 369 | 0.59 | 9,831 | 15.84 | 419 | 0.68 | 940 | 1.51 | 1,994 | 3.21 | 756 | 1.22 |
| 2013 | 65 | 0.11 | 24 | 0.04 | 9,340 | 15.68 | 376 | 0.63 | 9,583 | 16.09 | 340 | 0.57 | 1,030 | 1.73 | 1,667 | 2.80 | 1,692 | 2.84 |
| 2014 | 59 | 0.10 | 18 | 0.03 | 9,069 | 15.44 | 344 | 0.59 | 9,526 | 16.22 | 315 | 0.54 | 1,066 | 1.81 | 1,503 | 2.56 | 2,595 | 4.42 |
| 2015 | 50 | 0.09 | 22 | 0.04 | 8,334 | 14.65 | 261 | 0.46 | 9,820 | 17.26 | 276 | 0.49 | 1,070 | 1.88 | 1,336 | 2.35 | 3,236 | 5.69 |

Source: Ministry of Health and Welfare

Note: "Ratio" indicates the percentage of people in each disability category compared to the total number of children and youth with disabilities in the same year.

Attachment 6-3 (Paragraph 198) Statistics on the Schooling of Children and Youth with Disabilities

Unit: persons with disabilities

| School Year | Regular Schools | | | | Special Education Schools | | | | Schooling at Home | | | |
|-------------|--------------------|---------------|-------------------|--|---------------------------|---------------|-------------------|--|-------------------|---------------|-------------------|--|
| | Total | Primary Level | Junior High Level | High Level and Vocational Senior Level | Total | Primary Level | Junior High Level | High Level and Vocational Senior Level | Total | Primary Level | Junior High Level | High Level and Vocational Senior Level |
| 2011 | 95,885 (2.33%) | 53,435 | 24,664 | 17,786 | 6,730 (0.16%) | 956 | 1,145 | 4,629 | 1,249 (0.03%) | 765 | 484 | 0 |
| 2012 | 98,633 (2.21%) | 55,123 | 24,778 | 18,732 | 6,670 (0.14%) | 932 | 1,189 | 4,549 | 1,320 (0.02%) | 869 | 451 | 0 |
| 2013 | 100,752 (2.34%) | 55,471 | 26,273 | 19,008 | 6,618 (0.15%) | 911 | 1,186 | 4,521 | 1,229 (0.02%) | 775 | 415 | 39 |
| 2014 | 101,868 (2.46%) | 55,942 | 26,633 | 19,293 | 6,353 (0.15%) | 886 | 1,183 | 4,284 | 1,215 (0.02%) | 753 | 412 | 50 |
| 2015 | 101,416 (2.51%) | 55,721 | 26,246 | 19,449 | 6,193 (0.15%) | 841 | 1,076 | 4,276 | 1,170 (0.02%) | 707 | 352 | 111 |

Source: Ministry of Education

Note:

1. Percentage shown in the boxes of "Total" represents percentage of total children and youth attending schools described who have physical or mental disabilities.
2. The school year in the Republic of China begins in August and ends in July the following year and consists of two semesters. For example, the 2011 school year began in August 2011 and ended in July 2012.

Attachment 6-4 (Paragraph 199) Statistics on Individuals with Disabilities Between the Ages of 15 and 18 Receiving Vocational Training or Attending Special Vocational Training Classes

Unit: person

| Year | Vocational Schools | | Vocational Training Classes |
|------|--------------------------|-----------------------------|-----------------------------|
| | Vocational Senior School | School of Special Education | |
| 2011 | 11,517 | 4,629 | 36 |
| 2012 | 11,997 | 4,549 | 27 |
| 2013 | 12,072 | 4,521 | 26 |
| 2014 | 12,279 | 4,284 | 37 |
| 2015 | 12,409 | 4,279 | 27 |

Source: Ministry of Labor & Ministry of Education

Note: The number of students with disabilities accept special education in vocational schools, excluding those in comprehensive school.

Attachment 6-5 (Paragraph 200) Statistics on Beneficiaries of Subsidies for People with Disabilities (including Children and Youth with Disabilities)

Unit: person, person/time, NT\$

| Year | Subsidies for Living Expenses (monthly, on average) | Subsidies for Expenses of Day Care or Residential Care | Subsidies for Assistive Devices | Subsidies for National Health Insurance Premiums |
|------|--|--|-------------------------------------|---|
| 2011 | 346,226 persons / NT\$16,894,120,000 (monthly, on average) | 32,564 persons / NT\$5,377,800,000 (monthly, on average) | 76,289 persons / NT\$721,860,000 | 901,234 persons / NT\$3,801,240,000 (monthly, on average) |
| 2012 | 348,484 persons / NT\$20,153,890,000 (monthly, on average) | 33,779 persons / NT\$6,135,800,000 (monthly, on average) | 77,422 persons / NT\$728,820,000 | 907,962 persons / NT\$3,905,580,000 (monthly, on average) |
| 2013 | 348,316 persons / NT\$20,428,200,000 (monthly, on average) | 37,298 persons / NT\$6,135,800,000 (monthly, on average) | 70,564 persons / NT\$678,220,000 | 919,209 persons / NT\$3,880,320,000 (monthly, on average) |
| 2014 | 350,526 persons / NT\$20,527,740,000 (monthly, on average) | 39,199 persons / NT\$7,065,410,000 (monthly, on average) | 75,057 persons / NT\$729,240,000 | 927,018 persons / NT\$3,981,910,000 (monthly, on average) |
| 2015 | 350,813 persons / NT\$20,562,150,000 (monthly, on average) | 38,354 persons / NT\$7,646,630,000 (monthly, on average) | 80,148 persons / NT\$766,160,000 | 934,594 persons / NT\$3,998,780,000 (monthly, on average) |

Source: Ministry of Health and Welfare

Note:

1. Subsidies for Living Expenses: For a person with government-issued disability identification / certification cards who has lived in the address registered at local household registration office and has resided in the Republic of China for no less than 183 days in the past year, as long as he/she has not received any of the government subsidies or has not been put in placement, he/she can receive a monthly subsidy for living expenses, amounting to NT\$3,500, NT\$4,700, or NT\$8,200, depending on the level of disabilities and financial situation of the family.
2. Subsidies for Expenses of Day Care or Residential Care: For a person having day care or residential care at nursing facilities, he/she can receive subsidies ranging from 25% to 100% of the expenses of caring services, depending on the financial situation of the family.
3. Subsidies for Assistive Devices: For those who need assistive devices as assessed and certified by authorities, the government will provide subsidies ranging from 25% to 100% of the expenses, depending on the financial situation of the family.
4. Subsidies for Premiums of the National Health Insurance: For people with disabilities, the government is providing subsidies for the premiums, depending on the level of disabilities. For those with severe disabilities, the subsidy will fully cover the amount of premiums; for those with moderate disabilities, covering half; and for those with mild disabilities, 25%.

Attachment 6-6 (Paragraph 200) Statistics on Children and Youth with Disabilities Accommodated in Welfare Institutions

Unit: number of institutions, person

| Year | Number of Institutions | Approved Accommodation Capacity | Actual Number of Persons Accommodated | Number of Children and Youth with Disabilities | |
|------|------------------------|---------------------------------|---------------------------------------|--|--------|
| | | | | Male | Female |
| 2011 | 272 | 23,554 | 19,023 | 2,897 | 1,538 |
| 2012 | 271 | 23,183 | 19,092 | 2,701 | 1,442 |
| 2013 | 276 | 24,174 | 19,467 | 2,445 | 1,325 |
| 2014 | 273 | 23,454 | 18,967 | 2,438 | 1,269 |

Source: Ministry of Health and Welfare

Note: As of the end of 2014, there were 273 welfare institutions for people with disabilities, with the capacity of caring for 23,454 persons. So far, the institutions have accommodated 18,967 persons and are available for some 4,000 more persons. The service utilization rate reached 80.8%. Services provided included early intervention services, day care, arts and crafts courses, live-in caring and nursing, and welfare services. The authorities concerned will instruct local governments to reinforce their guidance and supervision of the institutions and to conduct regular assessment. In the meantime, the local governments should recruit and train professional service personnel so as to upgrade the service quality of welfare institutions and protect the rights and welfare of physically or mentally disabled persons (including children and youth with disabilities).

Attachment 6-7 (Paragraph 200) Statistics on Children and Youth with Disabilities Accommodated in Placement Institutions

Unit: institution, bed, person

| Year | Number of Institutions | Number of Beds Approved | Persons Accommodated | | | | | |
|------|------------------------|-------------------------|----------------------|--------|--|--------|---|--------|
| | | | Male | Female | Children or Youth with Disability Identification Cards | | Children Aged 6 or Under With Developmental Delay | |
| | | | | | Male | Female | Male | Female |
| 2011 | 120 | 4,577 | 1,837 | 1,772 | 179 | | 34 | |
| 2012 | 123 | 4,816 | 1,858 | 1,691 | 105 | 91 | 30 | 16 |
| 2013 | 126 | 4,985 | 1,842 | 1,700 | 101 | 96 | 29 | 21 |
| 2014 | 124 | 4,991 | 1,818 | 1,683 | 116 | 101 | 35 | 16 |

Source: Ministry of Health and Welfare

Note: Statistics on the number of people in placement institutions with government-issued disability identification cards started to include children and youth in 2013.

Attachment 6-8 (Paragraph 200) Statistics on Children and Youth with Disabilities in Foster Care

Unit: person, %

| Year | Total | Children and Youth in General | Children and Youth with Disabilities | Percentage of Children and Youth with Disabilities |
|------|-------|-------------------------------|--------------------------------------|--|
| 2011 | 2,764 | 2,464 | 300 | 11 |
| 2012 | 2,754 | 2,458 | 296 | 11 |
| 2013 | 2,702 | 2,398 | 304 | 11 |
| 2014 | 2,672 | 2,368 | 304 | 11 |

Source: Ministry of Health and Welfare

Attachment 6-9 (Paragraph 201) Statistics on Supportive Measures for Parents of Disabled Children and Youth

Unit: person, person/time

| Year | Household Visits | | Training and Learning Courses for Family Members | |
|------|------------------|------------------------|--|-----------------------|
| | Beneficiaries | Total Number of Visits | Beneficiaries | Attending Person/Time |
| 2013 | - | - | 3,994 | 29,681 |
| 2014 | - | - | 5,865 | 26,264 |
| 2015 | 4,377 | 47,029 | 4,820 | 24,873 |

Source: Ministry of Health and Welfare

Note: Statistics on household visits were first available in 2015; statistics on training and learning courses were first available in 2013 as the program began in July 2012.

Attachment 6-10 (Paragraph 206) Utilization Rate of Prenatal Examinations

Unit: %

| Year | Average Utilization Rate | Percentage of Pregnant Women Using the Examinations At Least Once | Percentage of Pregnant Women Using the Examinations At Least Four Times |
|------|--------------------------|---|---|
| 2011 | 93.1 | 98.3 | 96.7 |
| 2012 | 94.0 | 98.6 | 97.3 |
| 2013 | 94.3 | 98.5 | 97.4 |
| 2014 | 94.3 | 98.6 | 97.6 |
| 2015 | 94.8 | 98.7 | 97.7 |

Source: Ministry of Health and Welfare

Attachment 6-11 (Paragraph 208) Utilization Rate of Subsidies for Prenatal Genetic Screening

Unit: case, %

| Year | Subsidized Genetic Screening Cases | Cases of Genetic Defects | Service Utilization Rate among Pregnant Women (%) |
|------|------------------------------------|--------------------------|---|
| 2011 | 48,531 | 1,425 | 24.37 |
| 2012 | 55,808 | 1,531 | 26.37 |
| 2013 | 48,764 | 1,420 | 26.20 |
| 2014 | 51,421 | 1,565 | 25.19 |
| 2015 | 57,471 | 1,645 | 27.08 |

Source: Ministry of Health and Welfare

Note: Since there is no statistics on pregnant women with high risk for genetic defects, the calculation of utilization rate was based on the number of pregnant women using the second of the six prenatal examinations provided by the National Health Insurance. (Amniocentesis is usually done when a woman is between 16 and 18 weeks pregnant, around the time when a pregnant woman has her second prenatal examination). The Service Utilization Rate is the ratio of subsidized cases divided by the total number of pregnant women taking the second prenatal examination.

Attachment 6-12 (Paragraph 210) National Immunization Coverage Rates for Children

Unit: %

| Vaccine Year | Hep B | | DTaP-Hib-IPV | | Measles, Mumps, and Rubella Vaccine | Varicella Vaccine | Japanese Encephalitis Vaccine | |
|-----------------|----------------|---------------|---------------|----------------|--|----------------------|----------------------------------|---------------|
| | Second Dose | Third Dose | Third Dose | Fourth Dose | First Dose | Single Dose | Second Dose | Third Dose |
| 2011 | 97.72 | 96.92 | 96.68 | 95.94 | 98.06 | 96.81 | 96.27 | 92.2 |
| 2012 | 98.27 | 97.66 | 97.6 | 94.57 | 97.31 | 97.12 | 94.96 | 91.65 |
| 2013 | 97.98 | 97.44 | 97.34 | 96.16 | 98.28 | 98.08 | 96.24 | 91.64 |
| 2014 | 98.59 | 98.08 | 97.91 | 96.46 | 98.37 | 98.14 | 96.57 | 92.78 |
| 2015 | 98.47 | 97.56 | 97.35 | 92.43 | 97.99 | 97.79 | 95.8 | 92.41 |

Source: Ministry of Health and Welfare

Note: Since 2015, the immunization schedule of the fourth dose of D TaP-Hib-IPV vaccine was adjusted from 18th months to 27th months.

Attachment 6-13 (Paragraph 211) Statistics on Hearing Screening for Newborns

Unit: person, %

| Year | Number of Persons Screened | Screening Rate | Number of Abnormalities Found in Screening | Number Referred for Diagnostic Follow-up | Number Who Underwent Complete Diagnostic Assessment | Number of Infants Identified with a Hearing Impairment | Return Rate of Outpatient Department Referral |
|------|----------------------------|----------------|--|--|---|--|---|
| 2012 | 170,380 | 89.4 | 1,763 | 1,694 | 801 | 355 | 47.3 |
| 2013 | 190,003 | 97.3 | 1,935 | 1,853 | 1,512 | 684 | 81.6 |
| 2014 | 204,641 | 97.2 | 2,285 | 2,180 | 1,821 | 777 | 83.5 |
| 2015 | 208,722 | 97.8 | 2,412 | 2,323 | 1,940 | 795 | 83.5 |

Source: Ministry of Health and Welfare

Note: In 2010 and 2011, the authorities provided free hearing screening to newborn babies of financial disadvantaged families. Starting 2012, all newborn babies have been covered by the universal hearing screening program subsidized by the government.

Attachment 6-14 (Paragraph 211) Statistics on Screening of Congenital Metabolic Disorders in Newborns

Unit: case, %, person

| Year | Cases Screened | Coverage Rate | Cases of Abnormality Found in Screening |
|------|----------------|---------------|---|
| 2011 | 197,789 | 99.7 | 3,879 |
| 2012 | 234,072 | 99.8 | 4,873 |
| 2013 | 195,032 | 99.8 | 3,820 |
| 2014 | 211,272 | 99.8 | 4,385 |
| 2015 | 212,717 | 99.8 | 4,033 |

Source: Ministry of Health and Welfare

Attachment 6-15 (Paragraph 211) Utilization Rate of Children’s Preventive Health Checkups over the Past Years

Unit: person/time, %

| Service Year | Total (person/time) | Overall Utilization Rate | Male | | Female | |
|-----------------|------------------------|--------------------------------|-------------|---------------------|-------------|---------------------|
| | | | Person/time | Utilization Rate | Person/time | Utilization Rate |
| 2011 | 997,220 | 76.7 | 501,079 | 74.0 | 496,141 | 79.5 |
| 2012 | 1,106,080 | 77.4 | 541,260 | 74.4 | 564,820 | 84.4 |
| 2013 | 1,169,663 | 82.4 | 572,427 | 77.8 | 597,236 | 87.4 |
| 2014 | 1,104,160 | 77.6 | 536,888 | 72.9 | 567,272 | 82.7 |
| 2015 | 1,117,822 | 78.3 | 545,120 | 73.7 | 572,702 | 83.3 |

Source: Ministry of Health and Welfare

Note: Overall utilization rate = Preventive health checkups (person/times) received by children under the age of 7 during the year / expected checkups based on estimated mid-year population of children under the age of 7 (population under the age of 1 x 3 + 1-year-old population x 2 + 2-year-old population x 1 + [population of 3, 4, 5 and 6 year olds]/4 x 1)

Attachment 6-16 (Paragraph 213) Statistics on Eyesight, Strabismus and Amblyopia Screening for Preschoolers

Unit: person, %

| Item Year | Number of Preschoolers | Number of Preschoolers Screened | Rate of Screening | Rate of Those with Abnormalities Found in First Screening | Rate of Those with Abnormal Findings Getting Diagnostic Assessment | Rate of Those Identified with Abnormalities After Assessment |
|--------------|---------------------------|---------------------------------------|----------------------|---|--|--|
| | | | | | | |
| 2012 | 371,821 | 356,563 | 95.9 | 14.41 | 98.7 | 82.41 |
| 2013 | 381,039 | 359,154 | 94.3 | 13.97 | 98.7 | 79.24 |
| 2014 | 379,083 | 361,726 | 95.4 | 15.06 | 99.3 | 80.12 |
| 2015 | 350,568 | 349,952 | 99.8 | 14.23 | 99.3 | 77.32 |

Source: Ministry of Health and Welfare

Attachment 6-17 (Paragraph 232) Number of Children and Youth Covered by National Health Insurance

Unit: person, %

| Year | Item | Child and Youth Population (A) | Insured Children and Youth (B) | Insurance Coverage Rate (B/A) | Number of Children and Youth Receiving Subsidies for Health Insurance | | |
|------|------|--------------------------------|--------------------------------|-------------------------------|---|---|--|
| | | | | | Children and Youth with Disabilities | Children and Youth from Indigenous Families | Children and Youth from Disadvantaged Families |
| 2011 | | 4,469,350 | 4,372,574 | 97.83 | 55,911 | 38,361 | 1,574 |
| 2012 | | 4,380,203 | 4,284,598 | 97.82 | 53,531 | 35,288 | 1,654 |
| 2013 | | 4,258,385 | 4,172,990 | 97.99 | 52,426 | 33,932 | 1,126 |
| 2014 | | 4,149,792 | 4,067,729 | 98.02 | 50,197 | 33,602 | 1,270 |
| 2015 | | 4,043,357 | 3,961,311 | 97.97 | 50,700 | 32,796 | 1,113 |

Source: Ministry of Health and Welfare

Note: Article 3 of the “Regulations For Subsidizing Life Assistance As Well As Nursery And Medical Expenses Of Disadvantaged Children and Youth” stipulates that children and youth who are qualified to receive subsidies include: 1) children and youth from low-to-middle income households; 2) children and youth, as well as their offspring, who are suffering difficulties resulting from pregnancies or births; and 3) children and youth evaluated by competent authorities of the county (city) government who are being raised by people who cannot raise them, or do not have anybody to raise them, or the people responsible for raising them cannot afford to maintain their livelihoods.

Attachment 6-18 (Paragraph 232) Number of Beneficiaries Aged 18 or Under Receiving National Pension Payments as Surviving Family Members and the Total Amount of the Payments

Unit: person, NT\$

| Item | Beneficiaries in the Year | | | Beneficiaries Aged 18 or Under | | | Ratio of Beneficiaries Aged 18 or Under to Total Beneficiaries | | | Amount of Surviving Family Pension Payments Received by Beneficiaries Aged 18 or Under | | |
|-------|---------------------------|---------|-----------|--------------------------------|----------|------------|--|------------|--------------|--|-------------|-------------|
| | Total(T) | Male(A) | Female(B) | Total (t) | Male (a) | Female (b) | Total (t/T) | Male (a/A) | Female (b/B) | Total | Male | Female |
| 2011 | 43,720 | 17,294 | 26,426 | 12,118 | 6,552 | 5,566 | 27.72% | 37.89% | 21.06% | 205,225,924 | 110,076,561 | 95,149,363 |
| 2012 | 57,771 | 22,644 | 35,127 | 15,232 | 8,294 | 6,938 | 26.37% | 36.63% | 19.75% | 314,619,482 | 173,989,708 | 140,629,774 |
| 2013 | 70,743 | 27,163 | 43,580 | 17,662 | 9,605 | 8,057 | 24.97% | 35.36% | 18.49% | 375,837,759 | 207,131,007 | 168,706,752 |
| 2014 | 82,884 | 31,247 | 51,637 | 19,492 | 10,579 | 8,913 | 23.52% | 33.86% | 17.26% | 422,807,111 | 232,542,260 | 190,264,851 |
| 2015 | 94,043 | 34,735 | 59,308 | 20,715 | 11,263 | 9,452 | 22.03% | 32.43% | 15.94% | 454,456,564 | 249,545,673 | 204,910,891 |
| Total | 349,161 | 133,083 | 216,078 | 85,219 | 46,293 | 38,926 | 24.92% | 35.23% | 18.5% | 354,589,368 | 194,657,042 | 159,932,326 |

Source: Ministry of Health and Welfare

Note:

1. Any beneficiary receiving national pension payments as surviving family members is included in the statistics of the year, even if he/she has received the payment for just one month.
2. A beneficiary, no matter how many months he/she has received the monthly payment in the year, is counted as one person in the yearly statistics.

Attachment 6-19 (Paragraph 234) Statistics on Children and Youth of Low-Income and Low-To-Middle Income Households

Unit: person, %

| Year | Total Population | Child and Youth Population | | Impoverished Population (Low-Income and Low-To-Middle Income Households) | | | | Children and Youth from Low-Income Households | | | | Children and Youth from Low-to-Middle Income Households | | | | Persons Aged 18 or over In Low-Income and Low-To-Middle Income Households | | | | | | | |
|------|------------------|----------------------------|-----------|--|--|-----------------------|---------------------------------|---|-----------------------------------|--------------------------------|---|---|--|---|--|---|------|-------|--------|--------|---------|---------|---------|
| | | Total (Children And Youth) | Children | Youth | Total (Low-Income and Low-To-Middle Income Households) | Low-Income Households | Low-To-Middle Income Households | Total (Children and Youth of Low-Income Households) | Children Of Low-Income Households | Youth of Low-income Households | Total (Children and Youth Of Low-to-Middle Income Households) | Children of Low-To-Middle Income Households | Youth of Low-To-Middle Income Households | Total (Persons Aged 18 or over In Low-Income And Low-To-Middle Income Households) | Persons Aged 18 or over In Low-Income Households | Persons Aged 18 or over In Low-To-Middle Income Households | | | | | | | |
| 2011 | 23,224,912 | 4,469,350 | 2,628,612 | 1,840,738 | 434,324 | 1.87 | 314,282 | 1.36 | 120,042 | 0.51 | 125,759 | 2.81 | 28.95 | 57,619 | 68,140 | 55,171 | 1.23 | 12.7 | 34,406 | 20,765 | 253,394 | 188,523 | 64,871 |
| 2012 | 23,315,822 | 4,380,203 | 2,555,512 | 1,824,691 | 639,465 | 2.74 | 357,446 | 1.54 | 282,019 | 1.20 | 141,428 | 3.25 | 22.11 | 64,219 | 77,209 | 124,421 | 2.84 | 19.45 | 75,315 | 49,106 | 373,616 | 216,018 | 157,598 |
| 2013 | 23,373,517 | 4,258,385 | 2,500,859 | 1,757,526 | 696,156 | 2.98 | 361,765 | 1.55 | 334,391 | 1.43 | 139,428 | 3.27 | 21.91 | 62,475 | 76,953 | 141,896 | 3.33 | 20.38 | 81,555 | 60,341 | 414,802 | 222,337 | 192,495 |
| 2014 | 23,433,753 | 4,149,792 | 2,468,063 | 1,681,729 | 706,852 | 3.02 | 357,722 | 1.53 | 349,130 | 1.49 | 132,289 | 3.19 | 18.71 | 59,012 | 73,277 | 140,668 | 3.39 | 19.9 | 78,762 | 61,906 | 433,895 | 225,433 | 208,462 |
| 2015 | 23,492,074 | 4,043,357 | 2,457,079 | 1,586,278 | 698,675 | 3.01 | 342,490 | 1.46 | 356,185 | 1.55 | 123,020 | 3.04 | 17.38 | 54,825 | 68,195 | 138,314 | 3.42 | 19.54 | 75,790 | 62,524 | 437,341 | 219,470 | 217,871 |

Source: Ministry of Health and Welfare

Note:

1. A low-income household is a household in which the average monthly income per person in the household falls below the minimum cost of living in the region as set by local authorities, and total household assets do not exceed the amount of assets used by local authorities to define a low-income household.
2. A low-to-middle income household is a household in which the average monthly income per person in the household falls below 1.5 times the minimum cost of living in the region as set by local authorities, and total household assets do not exceed the amount of assets used by local authorities to define a low-to-middle income household.

Attachment 6-20 (Paragraph 235) Statistics on Child Care Services for Children Under the Age of 2

Unit: person, number of centers, %

| Year | Number of Children under Two Years of Age | Family Child Care Services | | | | | | Institutional Child Care Services | | | | Community-based Child Care Services | | Child Care Services Coverage |
|------|---|--|------------------------------|--------------------------|------------------------------|---|------------------------------|-----------------------------------|------------------------------|--------------------------|------------------------------|---|-------|------------------------------|
| | | Family Child Care Provider | | Private Infant Centers | | Public-Private Collaborative Infant Centers | | Number of Infant Centers | Number of Children Cared For | Number of Infant Centers | Number of Children Cared For | Public-Private Collaborative Resources Centers for Child Care | | |
| | | Number of Child Care Providers (including Relatives) | Number of Children Cared For | Number of Infant Centers | Number of Children Cared For | Number of Infant Centers | Number of Children Cared For | | | | | | | |
| | | | | | | | | | | | | | | |
| 2011 | 356,415 | 16,419 | 25,509 | 185 | 3,391 | - | - | - | - | - | 26 | - | 8.11 | |
| 2012 | 419,670 | 23,167 | 35,348 | 389 | 5,960 | 13 | 785 | 13 | 785 | 13 | 26 | 26 | 10.03 | |
| 2013 | 421,039 | 34,199 | 33,841 | 507 | 9,847 | 46 | 1,515 | 46 | 1,515 | 46 | 57 | 57 | 10.74 | |
| 2014 | 396,866 | 41,849 | 36,099 | 587 | 9,273 | 72 | 2,733 | 72 | 2,733 | 72 | 81 | 81 | 12.12 | |
| 2015 | 415,762 | 48,681 | 41,983 | 643 | 10,338 | 92 | 3,162 | 92 | 3,162 | 92 | 100 | 100 | 13.34 | |

Source: Ministry of Health and Welfare

Note: The “Program of Public-Private Collaborative Infant Centers and Public-Private Collaborative Resource Centers for Child Care” has been implemented since 2012.

Attachment 6-21 (Paragraph 235) Number of Children Between the Ages of 2 and 5 Attending Preschools

Unit: person

| Age \ School Year | Total | 2-year-old | 3-year-old | 4-year-old | 5-year-old |
|-------------------|---------|------------|------------|------------|------------|
| 2011 | 189,792 | 2,931 | 14,210 | 75,462 | 97,189 |
| 2012 | 459,653 | 28,204 | 80,296 | 159,502 | 191,651 |
| 2013 | 448,189 | 24,554 | 75,315 | 155,713 | 192,607 |
| 2014 | 444,457 | 29,358 | 83,124 | 145,153 | 186,822 |
| 2015 | 462,115 | 32,478 | 103,569 | 155,485 | 170,583 |

Source: Ministry of Education

Note:

1. The age of a child is calculated according to the individual's age on Sept. 1 of the year they enroll in school.
2. Statistics for 2011 only cover the number of children in kindergartens.

Attachment 6-22 (Paragraph 237) Statistics on Subsidies to Business Entities for Child Care Facilities or Measures

Unit: business entities, NT\$

| Item \ Year | Number of Business Entities Receiving Subsidies | Total Amount of Subsidies |
|-------------|---|---------------------------|
| 2011 | 81 | 7,535,000 |
| 2012 | 96 | 6,915,000 |
| 2013 | 99 | 8,769,000 |
| 2014 | 104 | 5,701,000 |
| 2015 | 106 | 6,470,000 |
| Total | 486 | 35,390,000 |

Source: Ministry of Labor

Attachment 6-23 (Paragraph 239) Statistics on Households Receiving Interest Subsidies for Mortgages and Rental Subsidies

Unit: household

| Year | Types of Services | Total | Family with Three or More Minor Children | Persons Under the Age of 25 with No Place to Go After Completing Placement | Victim of Domestic Violence or Sexual Assault and His/Her Children | Families in Hardship | Single-Parent Family | Three-Generation Family |
|-------|----------------------------------|--------|--|--|--|----------------------|----------------------|-------------------------|
| 2011 | Interest Subsidies for Mortgages | 682 | - | - | 6 | - | 676 | - |
| | Rental Subsidies | 17,595 | - | - | 179 | - | 17,416 | - |
| 2012 | Interest Subsidies for Mortgages | 512 | - | - | 6 | - | 506 | - |
| | Rental Subsidies | 9,246 | - | - | 67 | - | 9,179 | - |
| 2013 | Interest Subsidies for Mortgages | 342 | 195 | 0 | 11 | 23 | - | 113 |
| | Rental Subsidies | 9,007 | 5,040 | 17 | 160 | 548 | - | 3,242 |
| 2014 | Interest Subsidies for Mortgages | 454 | 246 | 0 | 8 | 31 | - | 169 |
| | Rental Subsidies | 10,555 | 5,459 | 10 | 134 | 809 | - | 4,143 |
| 2015 | Interest Subsidies for Mortgages | 501 | 255 | 0 | 6 | 38 | - | 202 |
| | Rental Subsidies | 11,515 | 5,625 | 1 | 140 | 826 | - | 4,923 |
| Total | Interest Subsidies for Mortgages | 2,491 | 696 | 0 | 37 | 92 | 1,182 | 484 |
| | Rental Subsidies | 57,918 | 16,124 | 28 | 680 | 2,183 | 26,595 | 12,308 |

Source: Ministry of the Interior

Note:

1. In 2011 and 2012, the various categories of households were classified in accordance with the “Regulations regarding Housing Subsidies.”
2. The “Housing Act” was promulgated on Dec. 30, 2011, and put into force on Dec. 30, 2012. Categories of households have been regulated by the “Housing Act” since 2013.

CHAPTER 7 EDUCATION, LEISURE AND CULTURAL ACTIVITIES

Attachment 7-1 (Paragraph 241) Statistics on Participation in Non-School-Based Experimental Education

Unit: person/time

| School Year | Total | Primary Schools | Junior High Schools | High Schools |
|-------------|-------|-----------------|---------------------|--------------|
| 2011 | 1,651 | 937 | 636 | 78 |
| 2012 | 1,860 | 1,252 | 403 | 205 |
| 2013 | 2,264 | 1,508 | 492 | 264 |
| 2014 | 2,823 | 1,907 | 641 | 275 |
| 2015 | 3,460 | 2,408 | 857 | 195 |

Source: Ministry of Education

Attachment 7-2 (Paragraph 241) Number of Formal Employed Teachers and the Student-Teacher Ratio in Primary and Junior High Schools

Unit: person, ratio

| School Year | Number of Full-time Teachers | | Student-Teacher Ratio | |
|-------------|------------------------------|---------------------|-----------------------|---------------------|
| | Primary Schools | Junior High Schools | Primary Schools | Junior High Schools |
| 2011 | 98,559 | 51,200 | 14.78 | 13.74 |
| 2012 | 97,466 | 51,872 | 14.09 | 13.00 |
| 2013 | 97,436 | 52,451 | 13.31 | 12.50 |
| 2014 | 98,580 | 52,154 | 12.70 | 12.07 |
| 2015 | 97,374 | 50,394 | 12.47 | 11.51 |

Source: Ministry of Education

Attachment 7-3 (Paragraph 241) Number of Full-Time and Part-Time Substitute Teachers in Primary and Junior High Schools

Unit: person

| School Year | Number of Substitute Teachers | |
|-------------|-------------------------------|---------------------|
| | Primary Schools | Junior High Schools |
| 2011 | 8,946 | 4,942 |
| 2012 | 9,345 | 4,932 |
| 2013 | 10,107 | 5,063 |
| 2014 | 11,173 | 5,056 |

Source: Ministry of Education

Note: Source of statistics is the “Annual Report on Teacher Cultivation Statistics.” The 2015 statistics are not available, since the 2015 annual report is not published yet.

Attachment 7-4 (Paragraph 241) Average Enrollment Rates at Different Level of Education

Unit: %

| School Year | Percentage of Primary School Graduates | Percentage of Junior High School Graduates | Percentage of Senior High School Graduates | |
|-------------|--|--|--|---------------------------------|
| | | | General Senior High Schools and Comprehensive High Schools | Skill-Based Senior High Schools |
| 2011 | 99.91 | 97.67 | 94.67 | 81.91 |
| 2012 | 99.91 | 99.15 | 94.75 | 83.51 |
| 2013 | 99.85 | 99.39 | 95.50 | 81.10 |
| 2014 | 99.95 | 99.52 | 95.70 | 81.01 |
| 2015 | 99.99 | 99.59 | 95.51 | 80.11 |

Source: Ministry of Education

Attachment 7-5 (Paragraph 246) The Enrollment Rate of 5-Year-Old Preschoolers

Unit: %

| School Year | Enrollment Rate |
|-------------|-----------------|
| 2011 | 94.50 |
| 2012 | 94.68 |
| 2013 | 93.74 |
| 2014 | 96.18 |
| 2015 | 96.05 |

Source: Ministry of Education

Attachment 7-6 (Paragraph 247) Tuition Fees for the 2015 School Year at Senior High Schools

Unit: NT\$

| School Category | | Public or Private | |
|---|---|-------------------|----------------|
| | | Public | Private |
| General Senior High School, Comprehensive Senior High School | | 6,240 | 12,170 ~22,800 |
| Skill-Based Senior High School, Cooperative Education Programs Based on Rotations | Agriculture, Industry, Commerce, Marine Science, Home Economics, Health Care Management | 5,400 | 13,220~22,530 |
| | Arts | 6,240 | 25,730~33,560 |
| Applied Technologies | | 5,400 | 13,220~22,530 |
| Further Education Programs (including Applied Technologies) | | 3,700 | 13,220~21,230 |

Source: Ministry of Education

Attachment 7-7 (Paragraph 250) Statistics on the Number of Students of Senior High School and Higher Levels Applying for Student Loans and the Amount of Loans Granted

Unit: person/time, person, NT\$

| School Year | Item | Total | Senior High Schools | | | Universities and Colleges | | |
|-------------|-----------------------|----------------|---------------------|------------|-------------|---------------------------|---------------|----------------|
| | | | Subtotal | Public | Private | Subtotal | Public | Private |
| 2011 | Loans Person/time | 709,981 | 81,279 | 11,715 | 69,564 | 628,702 | 127,019 | 501,683 |
| | Persons Granted Loans | 395,896 | 47,440 | 6,984 | 40,456 | 348,456 | 71,357 | 277,099 |
| | Amount of Loans | 26,522,819,318 | 850,033,474 | 95,582,291 | 754,451,183 | 25,672,785,844 | 3,656,636,118 | 22,016,149,726 |
| 2012 | Loans Person/time | 664,895 | 56,303 | 8,479 | 47,824 | 608,592 | 122,774 | 485,818 |
| | Persons Granted Loans | 367,728 | 33,064 | 5,078 | 27,986 | 334,664 | 66,859 | 267,805 |
| | Amount of Loans | 25,783,981,110 | 677,376,796 | 82,432,442 | 594,944,354 | 25,106,604,314 | 3,568,447,409 | 21,538,156,905 |
| 2013 | Loans Person/time | 621,476 | 40,772 | 6,468 | 34,304 | 580,704 | 116,562 | 464,142 |
| | Persons Granted Loans | 341,738 | 24,017 | 3,818 | 20,199 | 317,721 | 63,284 | 254,437 |
| | Amount of Loans | 24,731,787,803 | 540,944,458 | 71,548,983 | 469,395,475 | 24,190,843,345 | 3,400,742,102 | 20,790,101,243 |
| 2014 | Loans Person/time | 575,353 | 29,189 | 4,398 | 24,791 | 546,164 | 109,394 | 436,770 |
| | Persons Granted Loans | 319,254 | 17,590 | 2,661 | 14,929 | 301,664 | 59,798 | 241,866 |
| | Amount of Loans | 23,374,774,587 | 386,600,671 | 53,327,034 | 333,273,637 | 22,988,173,916 | 3,194,603,683 | 19,793,570,233 |

Source: Ministry of Education

Attachment 7-8 (Paragraph 253) Statistics on Dropouts from Elementary and Junior High Schools and Dropout Rate

Unit: person, %

| School Year | Number of Dropouts | Dropout Rate |
|-------------|--------------------|--------------|
| 2011 | 1,071 | 0.046 |
| 2012 | 818 | 0.037 |
| 2013 | 676 | 0.032 |
| 2014 | 661 | 0.032 |

Source: Ministry of Education

Note:

1. The number of dropouts of the year is based on records of dropouts who have not returned to school in July after the conclusion of a school year.
2. Dropout rate=number of dropouts in July after the conclusion of a school year / total of primary school and junior high school students x 100%

Attachment 7-9 (Paragraph 253) Statistics on Senior High School Students Discontinuing Schooling Rate

Unit: person, %

| School Year | Number of Students Discontinuing Schooling | Rate of Students Discontinuing Schooling |
|-------------|--|--|
| 2011 | 14,019 | 1.559 |
| 2012 | 25,115 | 2.818 |
| 2013 | 25,322 | 2.941 |
| 2014 | 23,444 | 2.863 |

Source: Ministry of Education

Note:

1. The number of students discontinuing schooling include cases of student absenteeism (students missing school for more than three days), leaving school without a trace, transferring from a school but not enrolling in a new school, suspending schooling, giving up student status, failing academic performance, and reaching the ceiling of schooling years.
2. Rate of Students Discontinuing Schooling = number of students discontinuing schooling during the school year / total number of senior high school students x 100%
3. A notification system for students discontinuing schooling was set up on April 18, 2011 for schools to report on such cases.

Attachment 7-10 (Paragraph 256) Statistics on Confirmed Cases of Bullying in Schools

Unit: person/time, case

| Year | Gender (person/time) | | Level of School | | | Identity | | | Locations | |
|------|----------------------|--------|-----------------|--------------------|--------------------|------------------|-----------------------------|---------------------|--|---------------------|
| | Male | Female | Primary School | Junior High School | Senior High School | Regular Students | Students with special needs | Indigenous Students | Municipalities Directly under the Central Government | Cities and Counties |
| 2013 | 587 | 201 | 55 | 123 | 26 | 713 | 20 | 55 | 146 | 58 |
| 2014 | 577 | 195 | 83 | 126 | 29 | 700 | 34 | 38 | 157 | 81 |
| 2015 | 487 | 168 | 72 | 111 | 21 | 585 | 24 | 46 | 121 | 83 |

Source: Ministry of Education

Note: The classified statistics have been available since 2012. The number of bullied students totaled 2,215, of whom 1,651 were male, and 564 were female.

Attachment 7-11 (Paragraph 263) Statistics on Participants in Various Training Projects

Unit: person, %

| Year | Overall Number of Participants | Aged 15 or Over but Under 18 | | Aged 15 or Over but Under 29 | |
|------|--------------------------------|------------------------------|------------------------------------|------------------------------|------------------------------------|
| | | Number of Participants | Percentage of Overall Participants | Number of Participants | Percentage of Overall Participants |
| 2011 | 8,544 | 583 | 6.82 | 7,961 | 93.18 |
| 2012 | 11,394 | 464 | 4.07 | 10,930 | 95.93 |
| 2013 | 12,094 | 382 | 3.16 | 11,712 | 96.84 |
| 2014 | 14,621 | 379 | 2.59 | 14,242 | 97.41 |
| 2015 | 15,144 | 433 | 2.86 | 14,711 | 97.14 |

Source: Ministry of Labor

Note: The various training projects include “Industry-Academia Training Cooperation Program,” “Dual System of Vocational Training Project in Taiwan,” “Youth’s Employment Ultimate Plan” and “Mentoring Training Project” which are open to youth aged 15 or over but under 29.

Attachment 7-12 (Paragraph 264) Implementation of “Youth On Light Project”

Unit: person

| Year | Target Number of Participants | Participants in the Project | Participants Accomplishing the Training |
|------|-------------------------------|-----------------------------|---|
| 2011 | 345 | 415 | 351 |
| 2012 | 295 | 339 | 305 |
| 2013 | 225 | 247 | 219 |
| 2014 | 302 | 333 | 303 |
| 2015 | 257 | 268 | - |

Source: Ministry of Education

Note:

1. Since 2014, the program has been implemented in step with the junior high school year. In 2014, the program was implemented between July 2014 and June 2015.
2. The project was renamed “Caring and Assistance Program for Youths Neither Enrolled nor Employed” since May 2016.

Attachment 7-13 (Paragraph 266) Statistics of Teachers and Students Participating in International Exchange Programs

Unit: school, %

| Year | Schools Participating in International Exchange Programs | Percentage of Overall Number of Primary and Junior High Schools | Percentages of Various Levels of Schools | | |
|------|--|---|--|--------------------|--------------------|
| | | | Primary School | Junior High School | Senior High School |
| 2011 | 1,189 | 32.20 | 22.58 | 30.63 | 64.48 |
| 2012 | 1,232 | 32.51 | 24.36 | 33.09 | 64.60 |
| 2013 | 1,329 | 32.12 | 26.59 | 38.98 | 64.96 |
| 2014 | 1,390 | 33.69 | 28.27 | 42.66 | 64.20 |
| 2015 | 1,399 | 33.86 | 12.97 | 28.62 | 50.95 |

Source: Ministry of Education

CHAPTER 8 SPECIAL PROTECTIVE MEASURES

Attachment 8-1 (Paragraph 295) Statistics on Placement of Children and Youth in Institutions in Compliance with Article 52 of the “Protection of Children and Youths Welfare and Rights Act”

Unit: person

| Year | Total | Male | Female |
|------|-------|------|--------|
| 2013 | 47 | 32 | 15 |
| 2014 | 27 | 17 | 10 |
| 2015 | 34 | 24 | 10 |

Source: Ministry of Health and Welfare

Note: The table shows statistics since 2013.

Attachment 8-2 (Paragraphs 297, 301) Statistics on Child and Juvenile Criminal Offenders and Status Offenders Investigated By District Courts

Unit: person

| Year | Child and Youth Criminal Offenders and Status Offenders | Total | Handed Over to Prosecutors (In Compliance with Article 27 of the "Juvenile Delinquency Act") | | | | Not Forwarded to the Court (In Compliance with Article 28 and Article 29 of the "Juvenile Delinquency Act") | | | | | In Process of Court Trial (see attachment 8-3) | Others (including cases of transfer jurisdiction, assisting in searching, and merged cases) | | |
|------|---|--------|---|---|---|----------------------------|--|---|----------|------------------------|------------------------|---|--|---------|--------|
| | | | Subtotal | Committing A Crime of a Minimum Five-year Imprisonment Term | Reaching the Age of 20 When Case in Court | Committing A Serious Crime | Subtotal | Case Should not be Forwarded to the Court | Subtotal | Transferred Counseling | Sent to be Disciplined | | | Warning | Others |
| 2011 | Total | 22,881 | 339 | 271 | 45 | 23 | 5,630 | 2,819 | 2,811 | 86 | 2,197 | 527 | 1 | 14,648 | 2,264 |
| | Youth Criminal Offenders | 19,211 | 339 | 271 | 45 | 23 | 4,821 | 2,385 | 2,436 | 75 | 1,886 | 474 | 1 | 12,094 | 1,957 |
| | Youth Status Offenders | 3,063 | - | - | - | - | 477 | 361 | 116 | 5 | 82 | 29 | - | 2,318 | 268 |
| | Child Criminal Offenders | 607 | - | - | - | - | 332 | 73 | 259 | 6 | 229 | 24 | - | 236 | 39 |
| 2012 | Total | 26,139 | 330 | 292 | 27 | 11 | 6,492 | 3,390 | 3,102 | 123 | 2,401 | 578 | - | 16,355 | 2,962 |
| | Youth Criminal Offenders | 20,777 | 329 | 292 | 26 | 11 | 5,185 | 2,575 | 2,610 | 73 | 2,027 | 510 | - | 12,891 | 2,372 |
| | Youth Status Offenders | 4,544 | 1 | - | 1 | - | 864 | 704 | 160 | 19 | 102 | 39 | - | 3,141 | 538 |
| | Child Criminal Offenders | 818 | - | - | - | - | 443 | 111 | 332 | 31 | 272 | 29 | - | 323 | 52 |
| 2013 | Total | 26,155 | 432 | 341 | 70 | 21 | 6,572 | 3,724 | 2,848 | 97 | 2,182 | 569 | - | 16,227 | 2,924 |
| | Youth Criminal Offenders | 19,318 | 432 | 341 | 70 | 21 | 5,017 | 2,709 | 2,308 | 79 | 1,766 | 463 | - | 11,699 | 2,170 |

| Year | Child and Youth Criminal Status Offenders and Status Offenders | Total | Handed Over to Prosecutors (In Compliance with Article 27 of the "Juvenile Delinquency Act") | | | | Not Forwarded to the Court (In Compliance with Article 28 and Article 29 of the "Juvenile Delinquency Act") | | | | | In Process of Court Trial (see attachment 8-3) | Others (including cases of transfer jurisdiction, assisting in searching, and merged cases) | |
|-------|--|--------|---|---|---|----------------------------|--|---|----------|------------------------|------------------------|---|--|---------|
| | | | Subtotal | Committing A Crime of a Minimum Five-year Imprisonment Term | Reaching the Age of 20 When Case in Court | Committing A Serious Crime | Subtotal | Case Should not be Forwarded to the Court | Subtotal | Transferred Counseling | Sent to be Disciplined | | | Warning |
| 2014 | Youth Status Offenders | 6,037 | - | - | - | - | 916 | 218 | 6 | 149 | 63 | - | 4,214 | 689 |
| | Child Criminal Offenders | 800 | - | - | - | 99 | 322 | 12 | 267 | 43 | - | 314 | 65 | |
| | Total | 22,441 | 245 | 173 | 63 | 9 | 3,256 | 2,571 | 112 | 1,944 | 515 | - | 13,514 | 2,855 |
| | Youth Criminal Offenders | 17,773 | 245 | 173 | 63 | 9 | 2,526 | 2,089 | 90 | 1,567 | 432 | - | 10,636 | 2,277 |
| | Youth Status Offenders | 3,822 | - | - | - | - | 627 | 130 | 6 | 93 | 31 | - | 2,555 | 510 |
| | Child Criminal Offenders | 846 | - | - | - | - | 103 | 352 | 16 | 284 | 52 | - | 323 | 68 |
| Total | 21,811 | 276 | 203 | 66 | 7 | 3,239 | 2,304 | 85 | 1,775 | 444 | - | 13,233 | 2,759 | |
| 2015 | Youth Criminal Offenders | 17,049 | 276 | 203 | 66 | 7 | 2,492 | 1,890 | 52 | 1,449 | 389 | - | 10,089 | 2,302 |
| | Youth Status Offenders | 4,076 | - | - | - | - | 636 | 115 | 7 | 83 | 25 | - | 2,924 | 401 |
| | Child Criminal Offenders | 686 | - | - | - | - | 111 | 299 | 26 | 243 | 30 | - | 220 | 56 |

Source: Judicial Yuan

Note:

1. Investigation: The court, upon accepting a case of juvenile delinquency, will start the investigation process.
2. Regulations regarding youth status criminals were first stated in the “Juvenile Delinquency Act” in 1962. Currently, Article 3 of the Act stipulates that youth status offenders include those frequently associated to people with criminal habits, frequently present at places unsuitable for juveniles, frequently skipping school or running away from home, participating in gangs, carrying knives or weapons without a valid reason, taking or injecting narcotics of psychedelic drugs other than anesthetics, intending to commit an offense, or attempting to commit an offense, which are not punishable by criminal law.

Attachment 8-3 (Paragraphs 297, 301) Statistics on Results of Court Trials on Child and Juvenile Protection Cases

Unit: person

| Year | Child and Youth Criminal Offenders and Status Offenders | Total | Handed Over to Prosecutors (In Compliance with Article 40 of the "Juvenile Delinquency Act") | | | | Cases in which Protective Measures not Applied (In Compliance with Article 41 of the "Juvenile Delinquency Act") | | | | Cases in which Protective Measures Applied (In Compliance with Article 42 of the "Juvenile Delinquency Act") | | | | | | Others (including cases of transfer jurisdiction, assisting in searching, and merged cases) | |
|------|---|--------|--|---|---|----------------------------|--|---|--|--------|--|---------|---|-----------------------|---|----------------------|---|-----------------------|
| | | | Subtotal | Committing A Crime of a Minimum Five-year Jail Term | Reaching the Age of 20 When Case in Court | Committing A Serious Crime | Subtotal | Case should not be forwarded to the Court | Case Not Suitable to be forwarded to Court | Others | Subtotal | Warning | Warning and Live Counseling Session on Holidays | Protective Discipline | Protective Discipline and Community Service Order | Placement Counseling | | Reformatory Education |
| 2011 | Total | 14,208 | 66 | 57 | 7 | 2 | 123 | 105 | 16 | 2 | 12,987 | 2,231 | 4,120 | 4,960 | 761 | 155 | 760 | 1,032 |
| | Youth Criminal Offenders | 11,678 | 66 | 57 | 7 | 2 | 117 | 101 | 14 | 2 | 10,840 | 1,918 | 3,540 | 4,003 | 595 | 128 | 656 | 655 |
| | Youth Status Offenders | 2,299 | - | - | - | - | 5 | 3 | 2 | - | 1,929 | 216 | 519 | 912 | 162 | 18 | 102 | 365 |
| | Child Criminal Offenders | 231 | - | - | - | - | 1 | 1 | - | - | 218 | 97 | 61 | 45 | 4 | 9 | 2 | 12 |
| 2012 | Total | 15,899 | 123 | 116 | 1 | 6 | 220 | 188 | 31 | 1 | 14,160 | 2,441 | 4,396 | 5,443 | 914 | 151 | 815 | 1,396 |
| | Youth Criminal Offenders | 12,620 | 123 | 116 | 1 | 6 | 203 | 181 | 21 | 1 | 11,418 | 2,079 | 3,590 | 4,244 | 712 | 120 | 673 | 876 |
| | Youth Status Offenders | 2,982 | - | - | - | - | 11 | 2 | 9 | - | 2,472 | 254 | 738 | 1,120 | 200 | 19 | 141 | 499 |
| | Child Criminal Offenders | 297 | - | - | - | - | 6 | 5 | 1 | - | 270 | 108 | 68 | 79 | 2 | 12 | 1 | 21 |
| 2013 | Total | 15,686 | 98 | 87 | 2 | 9 | 201 | 175 | 20 | 6 | 13,938 | 2,349 | 4,166 | 5,440 | 1,013 | 161 | 809 | 1,449 |
| | Youth Criminal Offenders | 11,374 | 98 | 87 | 2 | 9 | 191 | 171 | 14 | 6 | 10,425 | 1,903 | 3,229 | 3,871 | 674 | 113 | 635 | 660 |

| Year | Child and Youth Criminal Status Offenders | Total | Handed Over to Prosecutors (In Compliance with Article 40 of the "Juvenile Delinquency Act") | | | | Cases in which Protective Measures not Applied (In Compliance with Article 41 of the "Juvenile Delinquency Act") | | | | Cases in which Protective Measures Applied (In Compliance with Article 42 of the "Juvenile Delinquency Act") | | | | | | Others (including cases of transfer jurisdiction, assisting in searching, and merged cases) |
|------|---|--------|--|---|---|----------------------------|--|---|--|--------|--|---------|---|---------------------|-----------------------|---|---|
| | | | Subtotal | Committing A Crime of a Minimum Five-year Jail Term | Reaching the Age of 20 When Case in Court | Committing A Serious Crime | Subtotal | Case should not be forwarded to the Court | Case Not Suitable to be forwarded to Court | Others | Subtotal | Warning | Warning and Live Counseling Session on Holidays | Protective Measures | Protective Discipline | Protective Discipline and Community Service Order | |
| 2013 | Youth Status Offenders | 4,012 | - | - | - | - | 6 | 6 | - | 3,251 | 338 | 881 | 1,496 | 338 | 25 | 173 | 755 |
| | Child Criminal Offenders | 300 | - | - | - | 4 | 4 | - | 262 | 108 | 56 | 73 | 1 | 23 | 1 | 34 | |
| | Total | 13,021 | 67 | 60 | 6 | 1 | 150 | 119 | 31 | 11,721 | 2,054 | 3,412 | 4,469 | 931 | 193 | 662 | 1,083 |
| | Youth Criminal Offenders | 10,184 | 67 | 60 | 6 | 1 | 131 | 112 | 19 | 9,426 | 1,777 | 2,825 | 3,452 | 696 | 152 | 524 | 560 |
| 2014 | Youth Status Offenders | 2,548 | - | - | - | - | 14 | 2 | 12 | 2,038 | 166 | 529 | 947 | 235 | 24 | 137 | 496 |
| | Child Criminal Offenders | 289 | - | - | - | 5 | 5 | - | - | 257 | 111 | 58 | 70 | - | 17 | 1 | 27 |
| | Total | 12,514 | 75 | 64 | 3 | 8 | 138 | 124 | 13 | 10,838 | 1,806 | 2,901 | 4,461 | 828 | 154 | 688 | 1,463 |
| | Youth Criminal Offenders | 9,519 | 75 | 64 | 3 | 8 | 129 | 119 | 9 | 8,638 | 1,529 | 2,402 | 3,417 | 624 | 118 | 548 | 677 |
| 2015 | Youth Status Offenders | 2,787 | - | - | - | - | 6 | 3 | 3 | 2,006 | 189 | 461 | 988 | 203 | 26 | 139 | 775 |
| | Child Criminal Offenders | 208 | - | - | - | 3 | 3 | 2 | 1 | 194 | 88 | 38 | 56 | 1 | 10 | 1 | 11 |
| | Total | 10,184 | 208 | 208 | 3 | 11 | 208 | 208 | 4 | 8,970 | 2,777 | 5,399 | 6,041 | 829 | 36 | 140 | 786 |
| | Youth Criminal Offenders | 7,406 | 208 | 208 | 3 | 11 | 208 | 208 | 4 | 6,192 | 2,569 | 4,830 | 5,417 | 828 | 32 | 141 | 775 |

Source: Judicial Yuan

Note: The court, upon the conclusion of an investigation, will undertake trials of cases considered appropriate for a court trial.

Attachment 8-4 (Paragraph 310) Statistics on Correctional Counseling Measures for Children and Youth at Correctional Institutions

| Item | | Unit: person | | | | | |
|------|--|---|---|--|----------------------|--|--|
| Year | Visits for Family Members | Religious Instructions and Individual Counseling | Developing Skills | Connecting Children and Youth to Special Education Resources | Follow-up Counseling | School Transfers or Resumptions of Schooling | |
| 2011 | - | - | 17 vocational training and verification classes, 396 trainees; 11 short-term vocational training programs, 218 trainees. | - | - | - | |
| 2012 | Family Visitations attended by 2,352 person/times | 1. 1. A total of 2,609 sessions of religious instruction attended by 69,392 person/times. 2. 2. Individual counseling to 17,418 person/times | 18 vocational training and verification classes attended by 420 trainees; 14 short-term training programs attended by 257 trainees. | - | - | - | |
| 2013 | Family Visitations attended by 4,562 person/times | 1. 1. A total of 1,517 religious instructions attended by 48,572 person/times. 2. 2. Individual counseling to 13,026 person/times | 18 vocational training and verification classes attended by 425 trainees; 16 short-term training programs attended by 319 trainees. | - | - | - | |
| 2014 | 1. Family Visitations attended by 6,956 person/times 2. Juvenile-Family Meetings attended by 8,575 person/times (juveniles) and 8,462 person/times (family members) | 1. A total of 2,283 religious instructions attended by 49,732 person/times. 2. Individual counseling to 14,709 person/times | 17 vocational training and verification classes, 381 trainees; 19 short-term vocational training programs, 366 trainees. | - | A total of 847 youth | A total of 153 youth | |
| 2015 | 1. Family Visitations attended by 5,134 person/times 2. Juvenile-Family Meetings attended by person/times (juveniles) and 9,357 person/times (family members) | 1. A total of 2,378 religious instructions attended by 52,298 person/times. 2. Individual counseling to 18,871 person/times | 23 vocational training and verification classes, 529 trainees; 19 short-term vocational training programs, 395 trainees. | Getting special education teachers, one from Department of Education of Taoyuan City Government, two from Changhua Special | A total of 822 youth | 183 youth | |

| Item Year | Visits for Family Members | Religious Instructions and Individual Counseling | Developing Skills | Connecting Children and Youth to Special Education Resources | Follow-up Counseling | School Transfers or Resumptions of Schooling |
|--------------|---------------------------|--|-------------------|---|----------------------|--|
| | | | | Education School, and one from Hsinchu Special Education Resources Center, to assist in counseling courses. | | |

Source: Ministry of Justice

Note: Statistics of Family Visitations are available since 2012; Family Visitations and Juvenile-Family Meetings, since 2014; Religious Instructions and Individual Counseling, since 2012; Connecting Children and Youth to Special Education Resources, since 2015; Follow-up Counseling by phone, since 2014; School Transfers or Resumptions of Schooling, since 2014.

Attachment 8-5 (Paragraph 313) Statistics on the Number of Juveniles in Correctional Institutions for Committing Sexual Assaults

Unit: person

| Year | Total | Taoyuan Reform School | Changhua Reform School | Chengjheng High School (for juveniles under protective placement) | Ming Yang High School (for juvenile criminal offenders) |
|------|-------|-----------------------|------------------------|--|---|
| 2011 | 52 | - | - | - | 52 |
| 2012 | 165 | 36 | 37 | 27 | 65 |
| 2013 | 174 | 31 | 43 | 30 | 70 |
| 2014 | 168 | 27 | 43 | 34 | 64 |
| 2015 | 146 | 30 | 27 | 29 | 60 |

Source: Ministry of Justice

Note:

1. Definition of juvenile sexual assault offender: A juvenile who has committed the crime of sexual assault (forced sexual conduct against the will of the victim) as stipulated in Article 2, Paragraph 1, of the “Sexual Assault Crime Prevention Act,” which is in violation of Articles 221 to 227, Article 228, Article 229, Article 332, Paragraph 2-2, Article 334, Paragraph 2-2, and Article 348, Paragraph 2-1 of the “Criminal Code.”
2. Evaluation of punishments for juvenile sexual assault offenders, as stipulated in Article 20 of the revised “Sexual Assault Crime Prevention Act” which was promulgated on Jan. 1, 2012. No statistics of students in reform institutions in 2011.

Attachment 8-6 (Paragraph 314) Referrals of Juvenile upon Completing Reformatory Education, Concluding or Being Exempted from the Follow-up Counseling Program

Unit: person

| Year | Referrals after completion, termination or exemption of placement counseling | Referrals after completion, termination or exemption of reform education |
|-------|--|--|
| 2011 | - | 9 |
| 2012 | - | 473 |
| 2013 | 53 | 737 |
| 2014 | 117 | 942 |
| 2015 | 76 | 706 |
| Total | 246 | 2,867 |

Source: Ministry of Health and Welfare

Note:

1. Article 68, Paragraph 1 of the revised “Protection of Children and Youths Welfare and Rights Act” promulgated on Nov. 30, 2011 stipulates that local governments should follow up and provide guidance to a juvenile and his/her family for at least one year after the completion, termination or exemption of placement counseling or reform education.
2. The government started in 2013 to compile statistics of cases of referral after completion or exemption of placement counseling.

Attachment 8-7 (Paragraph 315) Statistics on Employment Services for Juveniles Leaving Correctional Institutions (Including Recommendations by Correctional Institutions and Services Provided by Public and Private Agencies)

Unit: person

| Year | Number of Juveniles Provided Employment Services | Number of Juveniles who Received Introductions to Job Opportunities |
|------|--|---|
| 2011 | 37 | 19 |
| 2012 | 81 | 42 |
| 2013 | 195 | 80 |
| 2014 | 158 | 64 |
| 2015 | 247 | 73 |

Source: Ministry of Labor

Attachment 8-8 (Paragraph 317) Statistics on Employment Services for Disadvantaged Youth

Unit: person

| Year | Number of Youth Provided Employment Services | Number of Youth who Received Introductions to Job Opportunities |
|------|--|---|
| 2011 | 416 | 209 |
| 2012 | 438 | 172 |
| 2013 | 584 | 285 |
| 2014 | 558 | 279 |
| 2015 | 217 | 103 |

Source: Ministry of Labor

Note: Definition of disadvantaged youth: A youth aged 15 or over but under 24 who is not attending school or not being employed after graduating from junior high school, or a youth living in remote areas or from a high-risk family.

Attachment 8-9 (Paragraph 324) Results of Inspections of Working Conditions Faced by Students in Part-time Jobs and Apprentices Engaged in Cooperative Education

Unit: time, %, case

| Year | Categories | Total Number of Inspections | Number of Violations | Rate of Reported Violations | Penalty Fine for Reported Violation | Cases Sent to the Authority for Investigation |
|------|---|-----------------------------|----------------------|-----------------------------|-------------------------------------|---|
| 2011 | Special Part-time Student Job Inspection | 50 | 30 | 60.00 | 29 | 1 |
| | Apprentice of Cooperative Education Case Special Inspection | 50 | 31 | 62.00 | 31 | - |
| 2012 | Special Part-time Student Job Inspection | 100 | 38 | 38.00 | 38 | - |
| | Apprentice of Cooperative Education Case Special Inspection | 50 | 20 | 40.00 | 20 | - |
| 2013 | Special Part-time Student Job Inspection | 100 | 58 | 58.00 | 58 | - |
| | Apprentice of Cooperative Education Case Special Inspection | 60 | 29 | 48.33 | 29 | - |
| 2014 | Special Part-time Student Job Inspection | 100 | 42 | 42.00 | 42 | - |
| | Apprentice of Cooperative Education Case Special Inspection | 60 | 19 | 31.67 | 19 | - |
| 2015 | Special Part-time Student Job Inspection | 175 | 54 | 30.86 | 53 | 1 |
| | Apprentice of Cooperative Education Case Special Inspection | 60 | 16 | 26.67 | 16 | - |

Source: Ministry of Labor

Attachment 8-10 (Paragraph 330) Statistics on Juvenile Narcotics-Related Criminal Offenders Compiled by the National Police Agency, Ministry of the Interior

Unit: person, %

| Year | All Narcotics-related Criminal Conduct | Juvenile Narcotics-related Criminal Conduct | Percentage of Juvenile Narcotics-related Criminal Conduct |
|------|--|---|---|
| 2011 | 48,875 | 1,317 | 2.69 |
| 2012 | 47,043 | 1,655 | 3.52 |
| 2013 | 43,268 | 1,519 | 3.51 |
| 2014 | 41,265 | 1,381 | 3.35 |
| 2015 | 54,112 | 1,986 | 3.67 |

Source: National Police Agency, Ministry of the Interior

Note:

1. All narcotics-related criminal conducts include criminal conducts involving category 1-4 narcotics.
2. Juvenile narcotics-related criminal conduct includes criminal conduct involving category 1-4 narcotics (trafficking, transfer, etc.) but does not include juveniles facing administrative penalties for using category 3 and category 4 narcotics as well as juvenile status offenders.

Attachment 8-11 (Paragraph 330) Statistics on Juveniles Involved in Criminal and Protection Cases for Violations of the “Narcotics Hazards Prevention Act” and for Using or Injecting Non-Opioid Drugs or Anesthetics Other Than Ecstasy

| Year | Criminal Cases in Violation of the “Narcotic Hazards Prevention Act” | | | | | Protection Cases in Violation of the “Narcotic Hazards Prevention Act” | | | | | Cases of Using or Injecting Non-Opioid Drugs or Anesthetic Other Than Ecstasy |
|------|--|--|--|--------------------|---|--|---|--|--------------------------------|--------------------|---|
| | Production Transporting and Selling of Category One Narcotics | Production Transporting and Selling of Category Two Narcotic | Production Transporting and Selling of Narcotics | Narcotics (Others) | Production Transporting and Selling of Category One Narcotics | Production Transporting and Selling of Category One Narcotics | Production Transporting and Selling of Category One Narcotics | Production Transporting and Selling of Narcotics | Narcotics (Using or Injecting) | Narcotics (Others) | |
| | | | | | | | | | | | |
| 2011 | 3 | 37 | 143 | 1 | - | 2 | 26 | 568 | 288 | 1,670 | |
| 2012 | 1 | 41 | 185 | 2 | - | 6 | 33 | 547 | 280 | 2,205 | |
| 2013 | 3 | 40 | 187 | - | - | 2 | 29 | 542 | 464 | 2,989 | |
| 2014 | 5 | 24 | 208 | - | 1 | 4 | 22 | 439 | 313 | 1,801 | |
| 2015 | 2 | 22 | 113 | 1 | - | 4 | 20 | 609 | 338 | 1,752 | |

Source: Judicial Yuan

Note: Statistics of protection cases shown here are numbers of ordered protective discipline cases.

Attachment 8-12 (Paragraph 330) Statistics on Juveniles Ordered to Receive Rehabilitation Treatment for Using Category One or Category Two Narcotics

Unit: person

| Year \ Category | Narcotics Rehabilitation Center | Juvenile Narcotics Rehabilitation Center |
|-----------------|---------------------------------|--|
| 2011 | 6 | 169 |
| 2012 | 5 | 133 |
| 2013 | 8 | 102 |
| 2014 | 8 | 123 |
| 2015 | 1 | 73 |

Source: Ministry of Justice

Attachment 8-13 (Paragraph 332) Statistics on Drug-Using Students Reported by Schools

Unit: person

| Year | Total | Primary Schools | Junior High Schools | Senior High and Vocational Schools | Universities and Colleges | |
|------|--------|-----------------|---------------------|------------------------------------|---------------------------|-----|
| 2011 | 1,810 | 3 | 598 | 1,174 | 35 | |
| 2012 | 2,432 | 8 | 855 | 1,503 | 66 | |
| 2013 | Male | 1,639 | 8 | 459 | 1,072 | 100 |
| | Female | 382 | 2 | 182 | 185 | 13 |
| 2014 | Male | 1,266 | 6 | 354 | 839 | 67 |
| | Female | 434 | 2 | 228 | 192 | 12 |
| 2015 | Male | 1,354 | 4 | 404 | 856 | 90 |
| | Female | 395 | 3 | 196 | 173 | 23 |

Source: Ministry of Education

Note:

1. Drug Abuse: using drugs that are classified as narcotics in the “Narcotic Hazards Prevention Act” not for medical purpose and not prescribed by medical doctors.
2. Statistics by gender have been available since 2013.

Attachment 8-14 (Paragraph 334) Number of Drug Suspects Arrested, Including Arrests of Minors. Reported by the Coast Guard Administration, Executive Yuan

Unit: case, person

| Year | Cases Uncovered | Persons Uncovered | Suspects under the Age of 18 |
|------|-----------------|-------------------|------------------------------|
| 2011 | 373 | 767 | 5 |
| 2012 | 314 | 563 | 5 |
| 2013 | 212 | 384 | 2 |
| 2014 | 227 | 435 | 3 |
| 2015 | 201 | 349 | 3 |

Source: Coast Guard Administration, Executive Yuan

Note: Cases (types of offense) include possession, sale, and transportation of narcotics.

Attachment 8-15 (Paragraph 334) Conclusion of Investigations of District Court Prosecutors' Offices on Cases of Drug Production, Selling and Transporting

Unit: person

| Year | Category | Total | Indictment | | Deferred Prosecution | Not to be Prosecuted | | Others |
|------|-----------------|--------|--|-------------------------------|----------------------|----------------------|---------|--------|
| | | | Indictments after Normal Juvenile Court Procedures | Requests for Summary Judgment | | Ex Officio | General | |
| 2011 | Juvenile | 253 | 235 | 1 | - | - | 10 | 7 |
| | Aged 18 or over | 10,344 | 7,479 | - | - | - | 1,672 | 1,193 |
| 2012 | Juvenile | 261 | 232 | - | - | - | 12 | 17 |
| | Aged 18 or over | 9,954 | 7,063 | 1 | - | - | 1,699 | 1,191 |
| 2013 | Juvenile | 313 | 293 | - | 1 | - | 14 | 5 |
| | Aged 18 or over | 10,088 | 7,151 | - | 1 | 1 | 1,696 | 1,239 |
| 2014 | Juvenile | 194 | 171 | - | - | - | 14 | 9 |
| | Aged 18 or over | 8,896 | 6,059 | 1 | - | - | 1,673 | 1,163 |
| 2015 | Juvenile | 178 | 158 | - | - | - | 9 | 11 |
| | Aged 18 or over | 8,340 | 5,606 | - | - | 6 | 1,766 | 962 |

Source: Ministry of Justice

Note: Pursuant to Article 27 of the "Juvenile Delinquency Act," a juvenile criminal offender is a person aged 14 or over but under 18 who has violated criminal law and the criminal offense is for a minimum punishment of 5 years of imprisonment; a criminal offender who has reached the age of 20 while the court action is pending; a juvenile whose offense is found serious by a juvenile court and forwarded to the prosecutors' office. Protective cases are not included.

Attachment 8-16 (Paragraph 336) Statistics on the Number of Cases of Sex Trade of Children and Youth, Suspects Arrested and Child and Youth Victims Rescued by the Police

Unit: case, person

| Year | Case | Suspects of Sex Exploitation | Child and Youth Victims Rescued |
|------|-------|------------------------------|---------------------------------|
| 2011 | 726 | 793 | 506 |
| 2012 | 1,014 | 1,304 | 403 |
| 2013 | 1,282 | 1,564 | 424 |
| 2014 | 1,399 | 1,585 | 458 |
| 2015 | 1,145 | 1,478 | 439 |

Source: Ministry of the Interior

Note:

1. Statistics of cases and suspects in violation of Articles 22 to 29 of the “Child and Youth Sex Trade Prevention Act” uncovered by the police.
 - (1) Article 22: Any person, who engages in sexual intercourse with a minor under the age of 16, or a youth over the aged 16 or over but under 18 in exchange for considerations, shall be punished.
 - (2) Article 23: Any person, who seduces or shelters a child or youth under the age of 18 to have the children or youth engage in sexual intercourse in exchange for considerations, shall be punished.
 - (3) Article 24: Any person, who by means of violence, coercion, intimidation or control with drugs or hypnosis to cause a child or youth under the age of 18 to engage in sexual intercourse in exchange for considerations, shall be punished.
 - (4) Article 25: Any person, who trades another person or makes another person a pledge to cause a child or youth to engage in sexual intercourse in exchange for considerations, shall be punished.
 - (5) Article 26: Any person, who has committed the crimes of Article 24 or Article 25 and causes death or seriously harm to the victim, shall be punished. (guilty of aggravated assaults)
 - (6) Article 27: Any person, who films a child or youth under the age of 18 engaging in sexual intercourse or obscene acts, or produces objects showing a child or youth under the age of 18 engaging in sexual intercourse or obscene acts, shall be punished.
 - (7) Article 28: Any person, who spreads or sells objects showing sexual intercourse or obscene acts, shall be punished.
 - (8) Article 29: Any person, who uses propaganda material to seduce or arrange for another person to engage in sexual intercourse, shall be punished.
2. The statistics of child and youth victims rescued are based on police uncovered cases of sex trade or suspected sex trade involving child and youth under the age of 18.

Attachment 8-17 (Paragraph 336) Statistics on Clients and Facilitators of Sex Trade Uncovered by the Police

Unit: case, person

| Year | Client | | Facilitators | |
|------|--------|---------|--------------|---------|
| | Cases | Persons | Cases | Persons |
| 2011 | 277 | 297 | 138 | 295 |
| 2012 | 363 | 387 | 141 | 270 |
| 2013 | 454 | 543 | 148 | 271 |
| 2014 | 494 | 514 | 136 | 245 |
| 2015 | 288 | 303 | 170 | 353 |

Source: Ministry of the Interior

Note:

1. Statistics of clients are based on cases uncovered by police involving sex with minors under the age of 16, or over the age of 16 but under the age of 18, in violation of Article 22 of the “Child and Youth Sex Trade Prevention Act,” which have been forwarded to prosecutors’ offices.
2. Statistics of facilitators of sex trade, who by seducing, sheltering, recruiting, arranging, assisting or using other means causes a juvenile under the age of 18 to engage in sexual intercourse in exchange for money or other considerations, in violation of Article 23 of the “Child and Youth Sex Trade Prevention Act,” are based on cases uncovered by the police and forwarded to prosecutors’ offices.

Attachment 8-18 (Paragraph 336) Statistics on Cases in Violation of the “Child and Youth Sex Trade Prevention Act” Processed by District Court Prosecutors’ Offices

| Category | Cases Accepted for Investigation | | | | | | | | | | | Conclusion of Investigation | | Indictment(Including Request for Sentencing and Summary Judgment) | | Deferred Prosecution | | Not to be Prosecuted | | Number of Cases Convicted | Number of Offenders Convicted |
|----------|----------------------------------|-----------|-------------|-----------|-----------------------------|----------------------------------|--------------------------------------|---|--------------------------|---------------|-------|-----------------------------|-------|---|-------|----------------------|-------|----------------------|-------|---------------------------|-------------------------------|
| | Total | Complaint | Prosecution | Surrender | Cases Handed Over by Police | Cases Handed Over by Coast Guard | Cases Handed Over by Military Police | Cases Handed Over by Other Prosecuting Agencies | Self-initiated reporting | Other Sources | Cases | Persons | Cases | Persons | Cases | Persons | Cases | Persons | Cases | Persons | Cases |
| | | | | | | | | | | | | | | | | | | | | | |
| 2011 | 700 | - | - | 630 | 1 | 3 | 27 | 1 | 38 | 927 | 633 | 927 | 219 | 393 | 163 | 175 | 203 | 289 | 201 | 253 | |
| 2012 | 894 | - | - | 764 | - | 2 | 77 | 4 | 47 | 806 | 1,173 | 806 | 273 | 425 | 205 | 226 | 241 | 394 | 252 | 321 | |
| 2013 | 1,227 | 2 | - | 1,040 | - | 5 | 106 | 5 | 69 | 1,154 | 1,442 | 1,154 | 397 | 516 | 310 | 335 | 298 | 409 | 354 | 391 | |
| 2014 | 1,159 | 4 | - | 1,029 | - | 1 | 70 | 6 | 49 | 1,179 | 1,364 | 1,179 | 326 | 397 | 308 | 323 | 442 | 518 | 394 | 439 | |
| 2015 | 925 | - | - | 808 | - | 1 | 58 | 1 | 57 | 950 | 1,146 | 950 | 272 | 348 | 247 | 253 | 348 | 448 | 296 | 318 | |

Source: Ministry of Justice

Note:

Reasons that some figures of Attachment 8-18 are different from those of Attachment 8-16:

1. Time gap between statistics compiled by police authorities on dates of uncovering the cases and statistics compiled by prosecutors’ offices on dates when cases were transferred for investigation by prosecutors.
2. Difference between cases uncovered and cases transferred: The police shall forward uncovered cases to juvenile courts, not prosecutors’ offices, when children and youth are involved in the cases, since minors under the age of 14 will not face penalty and those aged 14 or over but under 18 will only be transferred to prosecutors’ offices when judges find that the criminal conduct is subject to criminal disposal.
3. Prosecutorial statistics of the Ministry of Justice are based on the category of criminal conduct listed on documents of transfer, but the police administration may have a different classification system. If several categories of criminal conduct are listed in the document of transfer, only one will be entered into the statistical count.

Attachment 8-19 (Paragraph 339) Statistics on Protection Placement Approved by District Courts (Juvenile Courts and Family Courts) in Accordance with the “Child and Youth Sex Trade Prevention Act”

Unit: case, person

| Year | Total | | | Placement at Temporary or Proper Shelters | | | Continuous Placement | | | Extended Placement | | | Placement Terminated or Revoked | | | | | | | |
|-------|-------|----------|------|---|---------|----------|----------------------|---------|--------|--------------------|----------|------|---------------------------------|---------|----------|------|--------|-----|-----|-----|
| | Cases | Persons | | Cases | Persons | | Cases | Persons | | Cases | Persons | | Cases | Persons | | | | | | |
| | | Subtotal | Male | | Female | Subtotal | | Male | Female | | Subtotal | Male | | Female | Subtotal | Male | Female | | | |
| 2011 | 749 | 780 | 22 | 758 | 470 | 494 | 14 | 480 | 99 | 102 | 2 | 100 | 46 | 47 | 3 | 44 | 134 | 3 | 134 | |
| 2012 | 674 | 701 | 23 | 678 | 398 | 411 | 17 | 394 | 108 | 112 | 0 | 112 | 51 | 58 | 2 | 56 | 117 | 4 | 116 | |
| 2013 | 613 | 635 | 51 | 584 | 338 | 348 | 24 | 324 | 115 | 117 | 8 | 109 | 57 | 65 | 13 | 52 | 103 | 6 | 99 | |
| 2014 | 603 | 518 | 42 | 476 | 346 | 346 | 28 | 318 | 81 | 84 | 7 | 77 | 73 | 85 | 7 | 78 | 103 | 0 | 3 | |
| 2015 | 670 | 467 | 28 | 535 | 396 | 397 | 18 | 379 | 73 | 70 | 2 | 68 | 73 | 96 | 8 | 88 | 128 | 0 | 0 | |
| Total | 3,309 | 3,197 | 166 | 3,031 | 1,948 | 1,996 | 101 | 1,895 | 476 | 485 | 19 | 466 | 300 | 351 | 33 | 318 | 585 | 365 | 13 | 352 |

Source: Judicial Yuan

Attachment 8-20 (Paragraph 340) Number of Students at Transition Schools Jointly Operated by Social Welfare Institutions and Local Authorities

Unit: person

| Year | Adolescents' Home, Ministry of Health and Welfare | Yunlin Education and Nursing Institution, Ministry of Health and Welfare |
|------|---|--|
| 2011 | 70 | 24 |
| 2012 | 51 | 26 |
| 2013 | 45 | 27 |
| 2014 | 38 | 23 |
| 2015 | 30 | 17 |

Source: Ministry of Health and Welfare

Note: The two schools only accept female students

Attachment 8-21 (Paragraph 340) Number of Students in Independently Operated Transition Schools

Unit: person

| School Year | New Taipei Municipal Fongjhu Elementary and Junior School | Kaohsiung Municipal Nanzih Special School | Hualien County Nanping High School |
|----------------|---|---|------------------------------------|
| 2011 | 41 | 130 | 32 |
| 2012 | 54 | 109 | 24 |
| 2013 | 36 | 92 | 25 |
| 2014 | 21 | 82 | 69 |
| 2015 | 14 | 80 | 75 |

Source: Ministry of Education

Attachment 8-22 (Paragraph 340) Overview of Services at Transition Schools in 2015

Unit: person, hour

| | School Counseling | Skill Verification | Employment Counseling | Other Counseling Services |
|--|---|---------------------------------|--------------------------------------|---|
| Adolescents' Home, Ministry of Health and Welfare | 45 in junior high schools, 24 finished compulsory education, 47 in vocational high school special classes, 55 in vocational skill classes | 78 person/times in 9 categories | 15 finding employment outside school | 44 persons receive psychological counseling (577 person/times), 2,925 person/times supplementary education, 2,192 schooling hours |
| Yunlin Education and Nursing Institution, Ministry of Health and Welfare | 11 finished compulsory education, 6 attending community-based schooling program, 9 attending non-residence schooling program, 1 attending special primary level courses | 56 person/times in 6 categories | | 4 attending psychological counseling. 18 attending academic counseling |
| New Taipei Municipal Fongjhu Elementary and Junior School | | One person in one category | One on leave for employment | 67 person/times of psychological counseling 10 person/times of parent-child counseling |
| Kaohsiung Municipal Nanzih Special School | 80 person/times attending junior high and vocational high school courses | 36 person/times in 5 categories | | 15 psychological evaluation cases, 78 receiving counseling |
| Hualien County Nanping High School | 11 person/times of junior high level, 46 person/times of vocational high school level | 20 person/times in 5 categories | | 301 person/times of individual counseling 20 parent-child meetings |

Source: Ministry of Health and Welfare

Note: Extracted from the "Implementation Report of Child and Youth Sexual Exploitation Prevention's" section on transition school general services.

Attachment 8-23 (Paragraph 342) Number of Students Returning Home After Attending Transition Schools

Unit: person

| Year | Persons |
|------|----------------------|
| 2011 | 155 |
| 2012 | 109 |
| 2013 | 103 |
| 2014 | 100 |
| 2015 | Still being compiled |

Source: Ministry of Health and Welfare

Attachment 8-24 (Paragraph 346) Number of Child or Youth Trafficking Victims Uncovered by Judicial Police Authorities and Transferred for Protection

Unit: person

| Year | Persons |
|------|---------|
| 2011 | 80 |
| 2012 | 97 |
| 2013 | 87 |
| 2014 | 80 |
| 2015 | 90 |

Source: Ministry of the Interior

Attachment 8-25 (Paragraph 357) Statistics on Subsidies for Multicultural and Native Language Learning Programs for New Immigrants and Their Children Provided by the “New Immigrants Development Fund”

Unit: case, NT\$

| Item Year | Total | | Multi-culture | | Native Language Learning | | National New Immigrant Torch Project | |
|--------------|-------|-------------------|---------------|-------------------|--------------------------|-------------------|--------------------------------------|-------------------|
| | Cases | Amount of Subsidy | Cases | Amount of Subsidy | Cases | Amount of Subsidy | Cases | Amount of Subsidy |
| 2011 | 66 | 11,307,219 | 64 | 11,105,479 | 2 | 201,740 | - | - |
| 2012 | 48 | 164,381,856 | 44 | 11,774,785 | 3 | 401,080 | 1 | 152,205,991 |
| 2013 | 42 | 161,375,092 | 33 | 8,147,250 | 8 | 5,386,828 | 1 | 147,841,014 |
| 2014 | 26 | 168,194,963 | 19 | 5,855,680 | 6 | 4,777,668 | 1 | 157,561,615 |
| 2015 | 21 | 8,072,447 | 12 | 3,175,420 | 9 | 4,897,027 | - | - |

Source: Ministry of the Interior

Note: The National New Immigrant Torch Project aims at providing subsidies to the National Immigration Agency and the Ministry of Education for sponsoring multi-cultural and native language learning programs for new immigrants and their children.

Attachment 8-26 (Paragraph 361) Number of Classes in which Local Dialects Taught and Participating Students

Unit: class, person

| Language School Year | Class | | | | Students | | | |
|-------------------------|--------|------------------|--------|---------------------|-----------|------------------|---------|---------------------|
| | Total | Min Nan Language | Hakka | Aboriginal Language | Total | Min Nan Language | Hakka | Aboriginal Language |
| 2011 | 70,988 | 52,973 | 9,033 | 8,982 | 1,498,813 | 1,294,734 | 153,645 | 50,434 |
| 2012 | 73,217 | 53,722 | 9,603 | 9,892 | 1,419,787 | 1,214,367 | 155,238 | 50,182 |
| 2013 | 73,456 | 53,395 | 9,822 | 10,239 | 1,356,687 | 1,162,370 | 144,920 | 49,397 |
| 2014 | 76,031 | 55,553 | 10,491 | 9,987 | 1,311,766 | 1,122,024 | 142,024 | 47,718 |

Source: Ministry of Education

Attachment 8-27 (Paragraph 363) Statistics on Mongolian and Tibetan Language Classes in Junior and Senior High Schools

Unit: person, %

| Year | Number of Mongolian and Tibetan Children and Youth | Number of Children and Youth Benefited by the Language Programs | Percentage of Children and Youth Benefited by the Language Programs |
|------|--|---|---|
| 2011 | 143 | 27 | 18.88 |
| 2012 | 143 | 14 | 9.79 |
| 2013 | 131 | 22 | 16.79 |
| 2014 | 138 | 14 | 10.14 |
| 2015 | 149 | 26 | 17.45 |

Source: Mongolian and Tibetan Affairs Commission

Attachment 8-28 (Paragraph 364) Statistics on Hakka Language Proficiency Certification Achieved by Children and Youth Aged 19 or Under

Unit: person, %

| Year | Small Child Hakka Language | | | Basic Hakka Language | | | Medium and Medium-High Levels Hakka Language | | |
|------|----------------------------|---------------------|-------------------------|----------------------|---------------------|-------------------------|--|---------------------|-------------------------|
| | Number of Applicants | Number of Qualified | Percentage of Qualified | Number of Applicants | Number of Qualified | Percentage of Qualified | Number of Applicants | Number of Qualified | Percentage of Qualified |
| 2012 | 3,024 | 2,439 | 80.65 | 10,789 | 4,539 | 51.78 | 4,657 | 2,728 | 74.95 |
| 2013 | 3,713 | 3,389 | 91.27 | 8,613 | 2,642 | 36.53 | 3,936 | 1,852 | 53.45 |
| 2014 | 5,010 | 4,570 | 91.22 | 6,919 | 1,986 | 33.60 | 3,451 | 1,975 | 67.94 |
| 2015 | 5,548 | 5,007 | 90.25 | 7,731 | 4,140 | 62.58 | 2,787 | 1,529 | 65.29 |

Source: Hakka Affairs Council